

Quick Start User Manual AVRouter 8X8



Routes up to 8 X VGA and Stereo Audio Sources to 8 Remote Location at Distances up to 100 feet Away

SmartAVI's AVRouter 8x8 gives you the power to pull content from up to 8 separate computers and display it on up to 8 monitors individually or at the same time. As you will soon find, this dynamic hardware/software solution makes even the most "complicated" content delivery challenge a snap.

Whether you've purchased the AVRouter8x8 for a retail, recording studio or even mass-transit location, we encourage you to broaden your vision – explore your creativity and use this dynamic piece of hardware to your fullest advantage.

This matrix switch is a powerful tool that you will now use to convey your own message to clients, guests and/or employees the way you need it and want it to be displayed.

Getting Started

Hardware Installation

1. Connect a serial cable from the AVRouter 8x8 to the control computer. If you have installed the CD-ROM on a laptop, you can use a serial-to-USB adapter to make this connection.
2. Connect up to 8 computers containing your video content to the “video in” ports of the AVRouter 8x8, using VGA male to male extension cables. (same for the audio cables using 3.5mm stereo jack)
3. Connect up to 8 display monitors to the “video out” ports of the AVRouter 8x8, using XVGAI male extension cables.
4. Plug the power cord to the AVRouter 8x8 and turn the device on.
5. Turn on all computers and monitors being used.

Controlling the AVRouter 8x8

There are multiple ways to control the AVRouter 8x8. You can operate the router via:

- Front panel LCD display input
- RS-232 queries
- SmartAVI's Windows®-based software (included on CD-ROM)

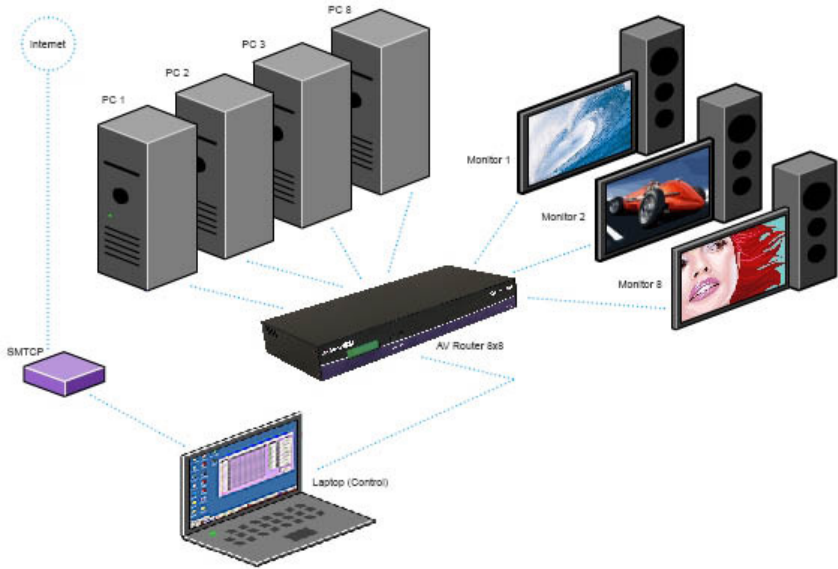
Note: If you use Mac rather than PC, or do not wish to install the CD-ROM software, the AVRouter 8x8 hardware can be programmed and controlled without it.

- Optional IR or TCP/IP (Internet control possible using SmartAVI's SMTCP device)

Input/Output Control

By using the Input/Output Select buttons on the front panel of the AVRouter 8x8, you can select which input port goes to which output port(s) of the device. This will have your digital signage up and running quickly and easily. If the router is powered off, you will need to manually set up the input/output settings again to your specifications.

Installation Diagram



What's in the Box

| PART NO. | QTY. | DESCRIPTION |
|---------------|------|--|
| AV08X08 | 1 | UXGA 8X8 Matrix Switch |
| PS5VD4A-WLLMT | 1 | Power Supply 5V DC 4A Wall mount |
| CCRS232MF06 | 1 | RS232 cable 6ft Male/Female |
| SM-CSW | 1 | Smart control application software providing source/destination selection, name editing, and messaging. Included in all SNX and SNV investments. |

Software Installation & Operation

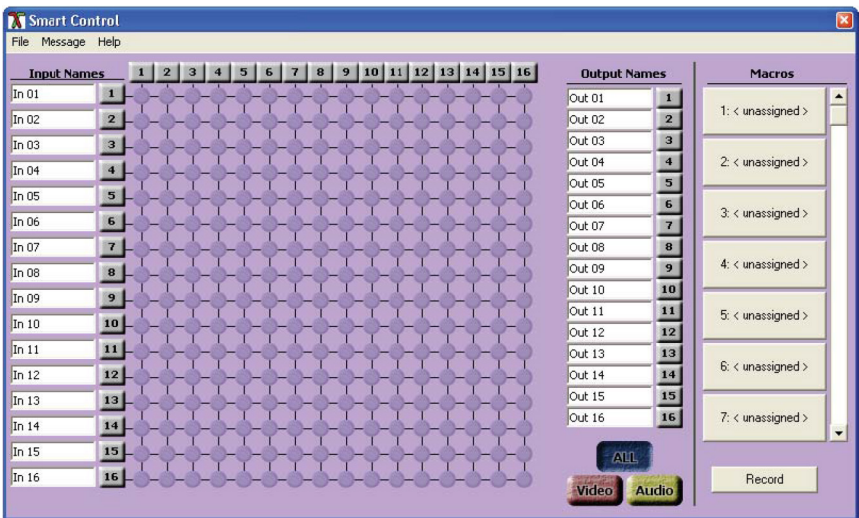
Inputs/Outputs: Enter the number of Inputs/Outputs your AVRouter has. For now we will assume that there are 16 inputs and 16 outputs.

Com Port: Select the appropriate com port that your computer is using to access the router.

Router Timeout: By default this is 0 meaning the computer acknowledges commands almost instantly. Sometimes a computer takes longer to respond. This setting should be left at 0. If you need to change it, it should be no higher than 0.2.

After you have entered in the necessary information click OK.

This will now take you to the Main Routing Window where you can route the different video/audio connections.



On this screen you will notice the input buttons running down the left side while the output buttons run across the top. They are each labeled 1 through 16.

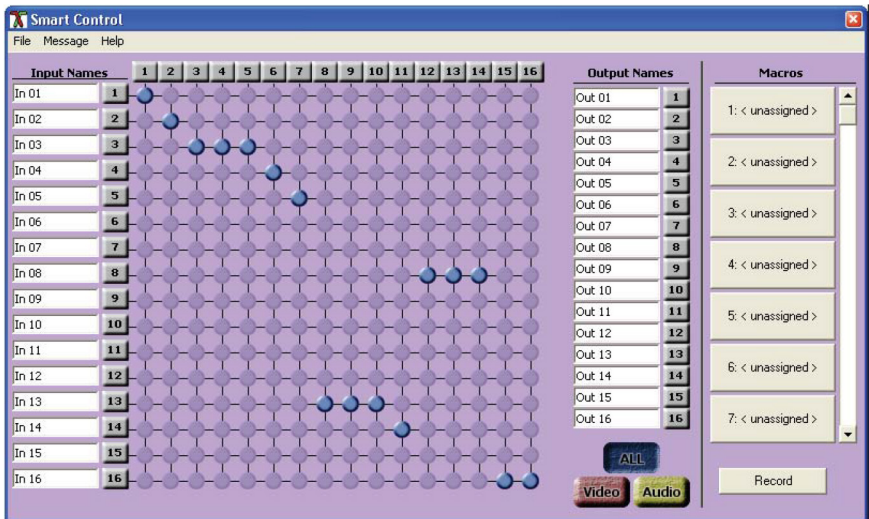
Note: The three small colored buttons at the lower right labeled ALL, VIDEO, and AUDIO are not available if AV Split was not checked when you configured your router.

Software Installation & Operation *cont.*

The Main Routing Window enables you to control the router(s) connections by means of the matrix panel, the button panel, or with pre-recorded routes called macros.

Matrix Panel: This is probably the simplest way to route the connections. Simply click on the cross point itself. The input on the left will then be routed to the output above.

Note: Inputs can be routed to several different outputs, but each output can only have a single input at any one time. So you can have several connections horizontally but not vertically.



The Button Panel: These are the numbered buttons across the top and left sides. Click an output button on the top, and then click an input button on the left.

Options for using the Button Panel:

Output Options:

To select multiple outputs next to each other, click on one output, then hold the shift key down and click the last output. When the input is clicked, it is routed to all selected outputs

To select multiple outputs individually, hold the control key down and click on any number of outputs. When the input is clicked, it is routed to all selected outputs.

Input Options:

To route an input to all the outputs at once, hold the control key down and click on an input.

To leave the outputs selected after the route is made, hold the shift key down and click on an input.

Software Installation & Operation *Cont.*

Macros: This section of the window is used to save and play back macros. Macros store a set sequence of routes.

To record a macro:

1. Click on the Record button (last button shown above). A blinking “recording” message below this button will be displayed to indicate that all routes are being recorded.
2. Select the desired cross points. (See Matrix Routing for details on making these routes.) There is no limit on the number of routes you may record.
3. If you click a macro button while in the record mode, the macro will be executed, and these routes will be added to the recording. This makes it possible to combine the routes of two or more macros into one bigger macro.
4. When finished, click the “Save Macro” button. You will be instructed to then click on one of the macro buttons. Doing this will save the recorded routes to that button. To cancel saving the macro, click the “Cancel Save” button.
5. To play back a macro, simply click on one of the 50 macro buttons. Use the scrollbar to bring any of these into view.
6. The macros are automatically saved in the current configuration file. They are also saved when you select the File/Save Configuration... menu.

To save macros in a separate file for a special purpose, select the File/Save Macros... menu.

Features

- Enriched content palette with the capability of being able to pull video, images, etc. from up to 8 separate CPU's to display on 1 to 8 monitors individually or at the same time.
- 8x8 non-blocking, single-link VGA/AUDIO matrix switch that supports HDTV resolutions up to 1920 x 1200.
- Control via front panel LCD display, RS-232 or over the internet (TCP/IP).
- Display high-definition content up to 60 feet away from the CPU's without the use of additional extension hardware.

Practical Applications

- Retail/Dealership Locations
- Restaurant/Lounge Digital Signage
- Mass-Transit Stations
- Hotel/Resort/Casino Information
- Movie Theaters
- Theme Parks
- Recording Studios
- Board/Meeting Rooms
- Educational Campuses

Technical Specifications

| VIDEO | |
|-----------|--|
| Connector | HD-15 socket |
| Format | VGA, SVGA, XGA, RGBHV, RGSB, CVBS, YC, YUV, RGBS |
| Syncs | TTL5VDC |
| In/Out | HD-15 female |

| AUDIO | |
|-----------|---|
| Signal | 15kHz 0db unbalanced 100 Ohms impedance |
| Connector | RCA or 3.5mm stereo jack |
| In/Out | 3.5mm stereo jack |

| OTHER | |
|------------------------|--|
| Voltage | 90 – 230V, 5VDC 3A A/S 50/60Hz |
| Control | RS-232 jacks, IR Optional, TCP/IP Optional |
| Height x Width x Depth | 1.5U (5.24" x 19" x 11.25") |
| Weight | 20lb |

| ORDER INFO | |
|------------|--|
| AV08X08S | Routes 8 UXGA/component to 8 remote monitors. Includes: [AV08X08, (PS5VDC 4A),CCRS23205MM, (SM-CSW)] |
| AV08X08AS | UXGA/audio routes 8 UXGA/audio to 8 remote monitors. Includes: [AV08X08A, (PS-5VDC 4A), CCRS23205MM, (SM-CSW)] |



11651 Vanowen St.
 North Hollywood, CA 91605
 Tel: (818) 503-6200 Fax: (818) 503-6208

www.smartavi.com