

EZ-WALL 2X2L

User Manual

Multi-Format Video Wall Controller



2x2 HD Video Wall Controller
2X HDMI and VGA Input
Integrated USB Media Player

Smart-AMV
SMART AUDIO VIDEO INNOVATION

TABLE OF CONTENTS

WHAT'S IN THE BOX?	2
INTRODUCTION	3
FEATURES	3
APPLICATIONS	3
TECHNICAL SPECIFICATIONS	4
HARDWARE INSTALLATION	5
FRONT PANEL CONTROL	6
IR REMOTE CONTROL	7-8
CONTROL VIA ETHERNET	9-11
LIMITED WARRANTY STATEMENT	12

Brackets for mounting this device in a standard 19" rack can be ordered from SmartAVI.

WHAT'S IN THE BOX?

PART NO.	QTY	DESCRIPTION
EZW2X2L-S	1	EZ-WALL 2X2L Video Wall Controller
PS12VDC5A	1	Power Adapter
SAVI-RMT	1	IR Remote Control
SM-EYE2	1	IR Receiver
	1	Quick Start Guide



Figure 2-1

INTRODUCTION

The EZ-WALL 2X2L offers top-notch HD HDMI output for five different types of signal inputs. Create striking 2x2 wall displays easily with simple signal-switching and flexible connectivity. The EZ-WALL 2X2L even features a fully-integrated USB media player.

Capable of expanding any supported video input to four large-scale screens at 1080p, the EZ-WALL 2X2L showcases stunning picture quality. In this guide, you will learn how to install and optimize your experience with the EZ-WALL 2X2L using basic steps. We will cover setting the hardware up, activating and connecting your systems, and offer helpful tips on how to best use EZWall-Pro's excellent selection of picture modes to enhance your video wall.

FEATURES

- Four screen (2x2) multi-Layout, multi-format video wall controller
- Outputs: (4) HDMI
- Inputs: (2) HDMI, (1) VGA
- Integrated USB Media Player for digital video, imagery and audio
- Internal EDID learning
- 1080p (1920x1080 @ 60Hz) Full HD resolution output
- No additional hardware or software required
- Supports control via Front Panel Buttons
- Supports control via IR Remote control
- Supports control via TCP/IP
- HDCP and HDMI 1.4 compliant

APPLICATIONS

- Corporate or Educational Presentations
- Airport Installations
- Wall Displays
- Digital Signage
- Dealer Rooms
- Control Rooms
- Shopping Centers
- Security
- Point-of-Sale
- Entertainment Venues
- Corporate Lobbies
- Restaurants

TECHNICAL SPECIFICATIONS

VIDEO & AUDIO	
Output Resolutions	Up to 1080P (1920x1080@60Hz)
Input Resolutions	Up to 1080P (1920x1080)
Outputs	(4) HDMI
Inputs	(2) HDMI, (1) VGA, (2) USB 2.0 Type A
HDCP Compliance	1.0/2.0
Audio	(1) 3.5 mm input, (1) 3.5 mm output
CONTROL	
Front Panel	Buttons
IR Remote Control	SAVI-RMT
Ethernet (TCP/IP)	RJ-45
OTHER	
Power	PS12VDC5A
Dimensions	7.5" W x 2" H x 8.25" D
Weight	2.8 lbs.
USB MEDIA PLAYER	USB player requires the IR Remote Control for navigation and media selection.
Signal Type	USB 2.0, 1.1, and 1.0 (Type A)
Video Formats *	MJPEG, MPEG-1, MPEG-2, MPEG-4, Vvid, DivX H.264
Max Resolution	1920x1080 @30fps
Max Data Rate	20 Mbps
Audio Formats *	MP3, WMA, AAC, MP2, PCM, AC3
Photos Max Resolutions *	JPEG - 15360x8640, BMP - 9600x6400, PNG - 9600x6400

*PLEASE NOTE: EZ-WALL 2X2L only supports the primary formats listed above. Any unlisted formats are not compatible with EZWall-Pro.

HARDWARE INSTALLATION

1. Position EZ-WALL 2X2L conveniently and keep it unplugged
2. Connect HDMI output cables between the EZ-WALL 2X2L and your video wall screens
3. Connect any input to their corresponding signal source input connector (Blu-Ray player, computer, etc)
4. Optionally connect the IR EYE (receiver) to the IR input jack on the EZ-WALL 2X2L
5. Optionally connect an audio source to the audio input jack on the EZ-WALL 2X2L.
6. Optionally connect an Ethernet cable for additional control over your LAN or the internet (TCP/IP)
7. Optionally connect USB storage devices
8. Optionally connect Speakers. (You can use sound via HDMI instead if your systems support this.)
9. Turn on the EZ-WALL 2X2L and wait a few seconds for the unit to initialize.

Note: The EZ-WALL 2X2L uses it's own default internal EDID.
The HDMI EDID is named "CNDLCD" & the VGA EDID is named "FULL HD".

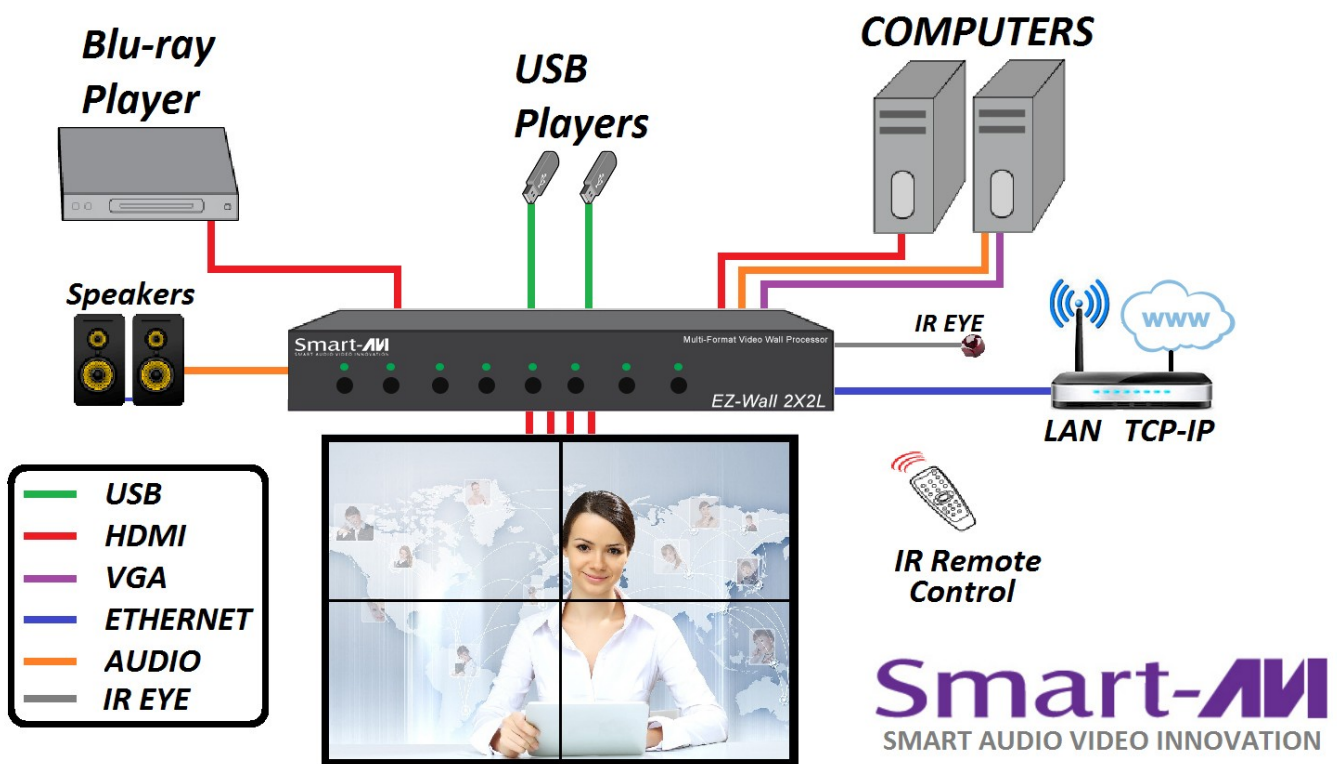


Figure 5-1



Figure 5-2

FRONT PANEL CONTROL

To switch between listed sources, press:

1. VGA
2. HDMI 1
3. HDMI 2
4. USB 1
5. USB 2

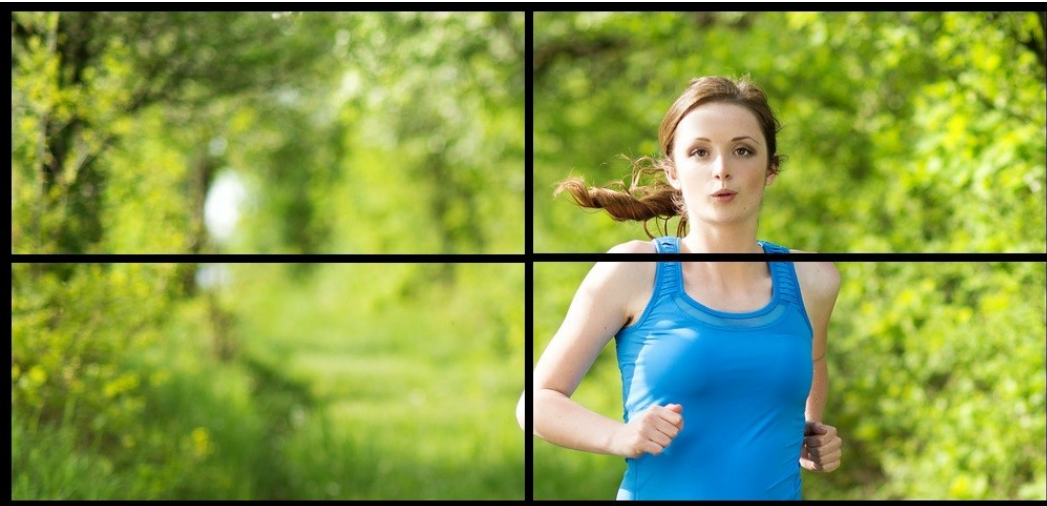
To switch to Video Wall mode, press the WALL button.

To switch to Clone mode, press the CLONE button.

Pressing the LOCK button will Disable the other buttons.



VIDEO WALL MODE



An Image can be displayed across four HD screens 2X2.

Figure 6-1

CLONE MODE



The image can be displayed on each display individually.

Figure 6-2

IR REMOTE CONTROL

BUTTON	DESCRIPTION
WALL	Video Wall Mode (Figure 6-1)
CLONE	Clone Mode (Figure 6-2)
M1	LOCK or UNLOCK (Disables or enables all other buttons)
SOURCE	Pressing SOURCE followed by pressing a number will select the source port number. (Table 7-1)
F1	1X2 Mode * (Page 8, Figure 8-1)
F2	2X1 Mode * (Page 8, Figure 8-2)

USB PLAYER REMOTE CONTROL **

BUTTON	DESCRIPTION
	While Navigating ON Screen Menus
USB	Pressing USB followed by pressing number 1 or 2 will select the USB port.
[OK] Center Button	Enter or Select
CH+	Navigate UP
CH-	Navigate DOWN
◀-	Navigate LEFT
▶+	Navigate RIGHT
	While Videos or Pictures are displayed
[OK] Center Button	DISPLAY MENU
CH-	TURN OFF MENU
◻+	VOLUME UP
◻-	VOLUME DOWN

STAND BY



Source Port Numbers:

1. VGA
2. HDMI 1
3. HDMI 2

Table 7-1

* Note that when not using all four displays the unused displays will be a clone of output #1

** The USB player requires the IR Remote Control for navigation and media selection.

IR REMOTE CONTROL (Continued)



Note that when not using all four displays the unused displays will be a clone of output #1

Figure 8-1
1X2 Mode
(F1 Button)



Figure 8-2
2X1 Mode
(F2 Button)

CONTROL VIA ETHERNET

EZ-WALL 2X2L TCP/IP control is a feature that allows mode switching and other configurations to be controlled remotely via HTTP. Manage your EZ-WALL 2X2L with ease from anywhere in the world.

First you must find the IP address for the EZ-Wall-Pro. Finder.exe (Smart IP-Finder) is conveniently available on our website; please visit www.smartavi.com/helpful-links.html for this and our full list of compatible third-party software. Download and execute the IP address Finder software for your product. The EZ-WALL 2X2L and its IP address should appear in the display as shown in Figure 9-1.

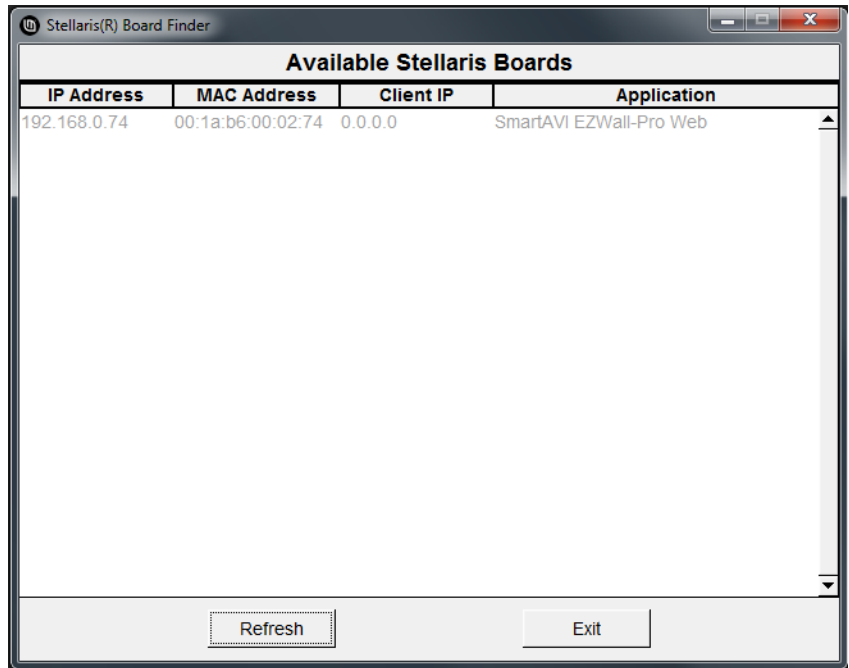


Figure 9-1

Enter the IP address into a web browser of your choice. You should see the EZ-WALL 2X2L Home/Welcome page as shown in Figure 9-2.

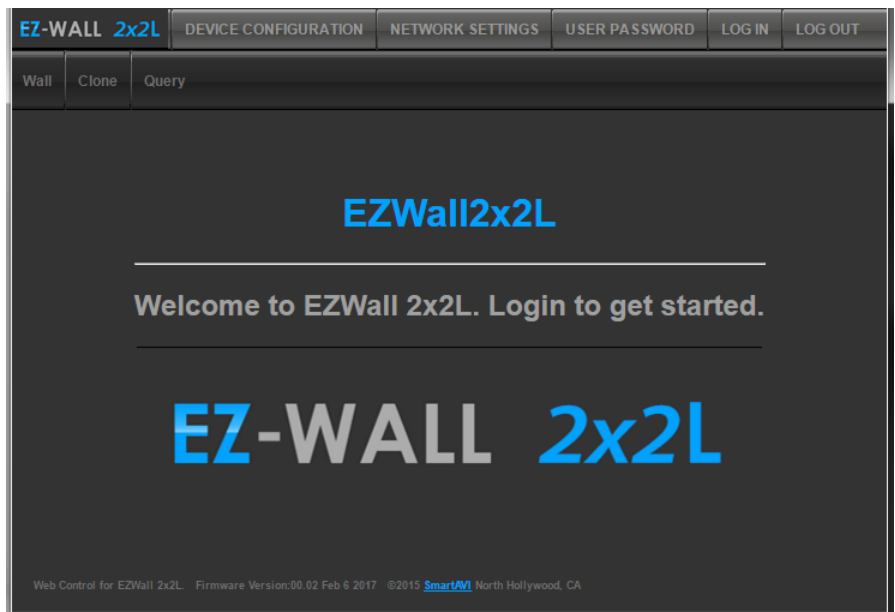
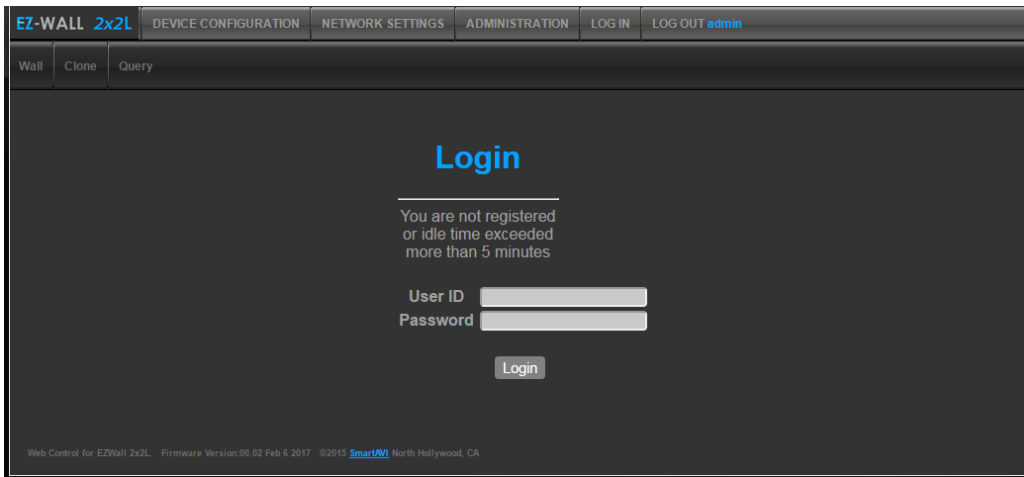


Figure 9-2

CONTROL VIA ETHERNET (Continued)

Click on the LOG IN tab in the top tool bar.
Enter the User ID and Password in the Login page.
The User ID and Password are case sensitive.
User ID = admin, Password = 1234

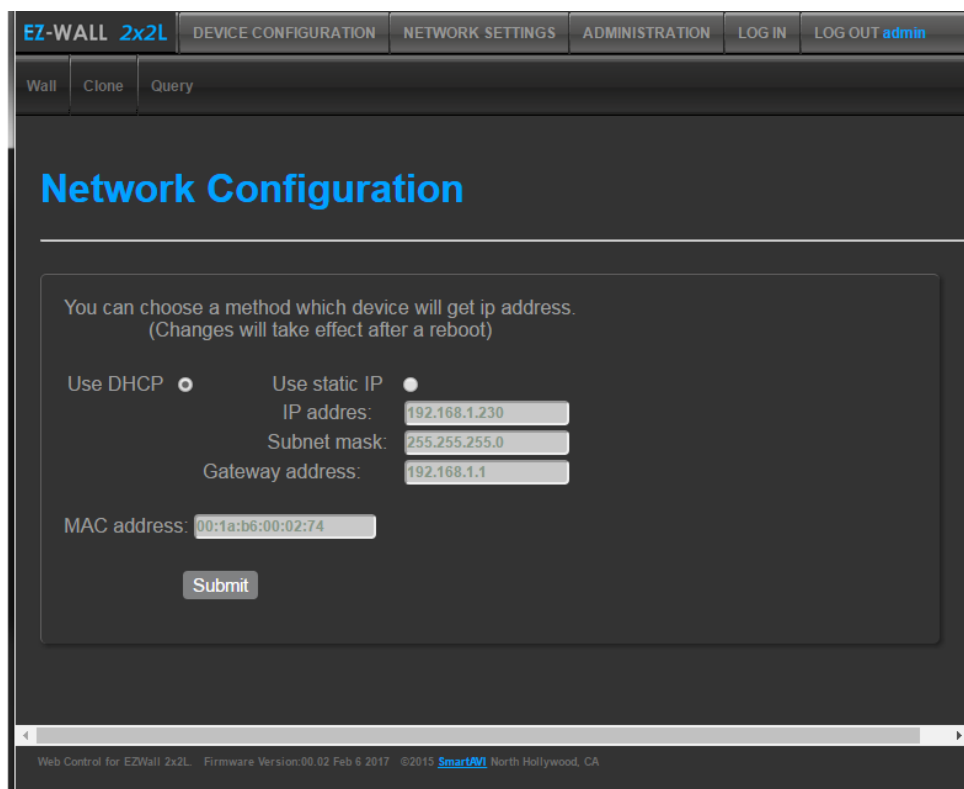
You can change the User ID and password by clicking the ADMINISTRATION Tab. See Figure 10-1



The screenshot shows the web interface for an EZ-WALL 2x2L device. The top navigation bar includes tabs for DEVICE CONFIGURATION, NETWORK SETTINGS, ADMINISTRATION, LOG IN, and LOG OUT (admin). Below this, there are sub-tabs for Wall, Clone, and Query. The main content area is titled "Login" and contains a message: "You are not registered or idle time exceeded more than 5 minutes". Below the message are input fields for "User ID" and "Password", and a "Login" button. At the bottom of the page, there is a footer: "Web Control for EZWall 2x2L. Firmware Version:00.02 Feb 6 2017 ©2015 SmartWall North Hollywood, CA".

Figure 10-1

Click the Network Settings tab in the top toolbar to configure your network settings.
See Figure 10-2.



The screenshot shows the "Network Configuration" page in the EZ-WALL 2x2L web interface. The top navigation bar is the same as in Figure 10-1, but the "NETWORK SETTINGS" tab is selected. Below the navigation bar, there are sub-tabs for Wall, Clone, and Query. The main content area is titled "Network Configuration" and contains a message: "You can choose a method which device will get ip address. (Changes will take effect after a reboot)". Below the message are two radio buttons: "Use DHCP" (selected) and "Use static IP". Under "Use static IP", there are input fields for "IP address" (192.168.1.230), "Subnet mask" (255.255.255.0), and "Gateway address" (192.168.1.1). Below these fields is a "MAC address" field with the value 00:1a:b6:00:02:74. A "Submit" button is located at the bottom of the configuration area. At the bottom of the page, there is a footer: "Web Control for EZWall 2x2L. Firmware Version:00.02 Feb 6 2017 ©2015 SmartWall North Hollywood, CA".

Figure 10-2

CONTROL VIA ETHERNET (Continued)

You can use the internal web page to set the EZ-WALL 2x2L to Wall Mode or Clone Mode and set the desired source*. Click the DEVICE CONFIGURATION TAB. See Figures 11-1 and 11-2.

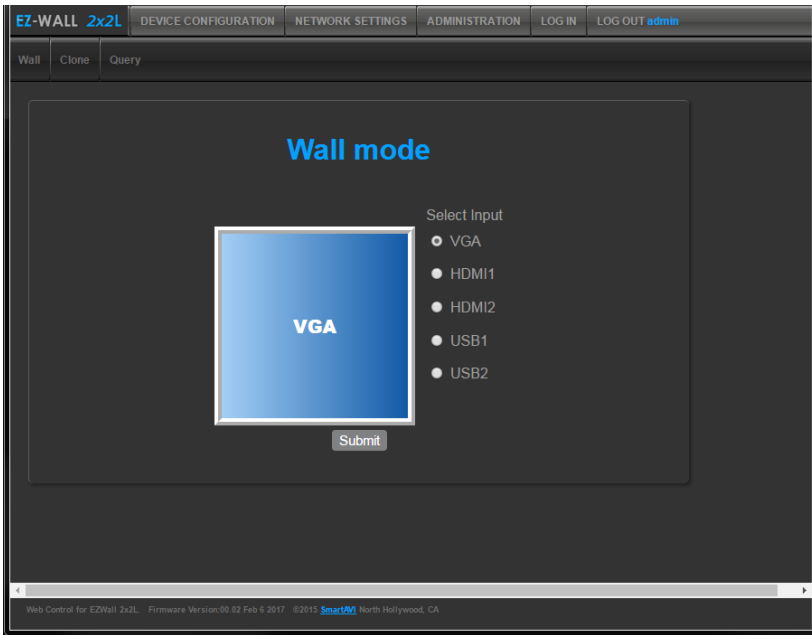


Figure 11-1

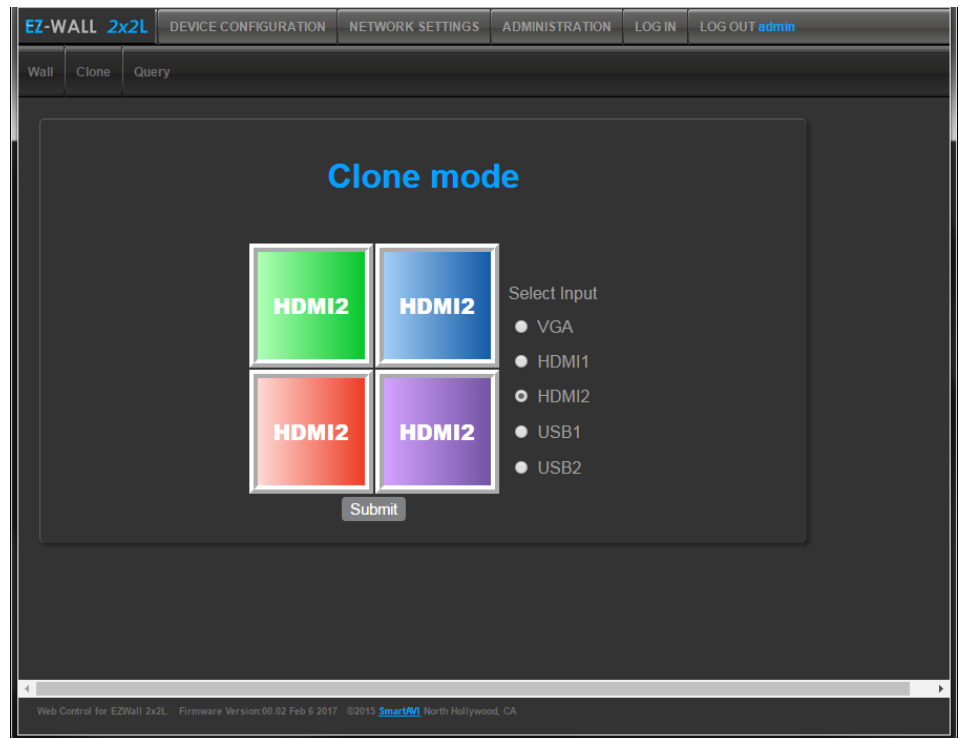


Figure 11-2

* USB player requires the IR Remote Control for navigation and media selection.

LIMITED WARRANTY STATEMENT

A. Extent of limited warranty

Smart-AVI Technologies, Inc. warrants to the end-user customers that the Smart-AVI product specified above will be free from defects in materials and workmanship for the duration of 1 year, which duration begins on the date of purchase by the customer. Customer is responsible for maintaining proof of date of purchase.

Smart-AVI limited warranty covers only those defects which arise as a result of normal use of the product, and do not apply to any:

- a. Improper or inadequate maintenance or modifications
- b. Operations outside product specifications
- c. Mechanical abuse and exposure to severe conditions

If Smart-AVI receives, during applicable warranty period, a notice of defect, Smart-AVI will at its discretion replace or repair defective product. If Smart-AVI is unable to replace or repair defective product covered by the Smart-AVI warranty within reasonable period of time, Smart-AVI shall refund the cost of the product.

Smart-AVI shall have no obligation to repair, replace or refund unit until customer returns defective product to Smart-AVI.

Any replacement product could be new or like new, provided that it has functionality at least equal to that of the product being replaced.

Smart-AVI limited warranty is valid in any country where the covered product is distributed by Smart-AVI.

B. Limitations of warranty

To the extent allowed by local law, neither Smart-AVI nor its third party suppliers make any other warranty or condition of any kind whether expressed or implied with respect to the Smart-AVI product, and specifically disclaim implied warranties or conditions of merchantability, satisfactory quality, and fitness for a particular purpose.

C. Limitations of liability

To the extent allowed by local law the remedies provided in this warranty statement are the customers sole and exclusive remedies.

To the extent allowed by local law, except for the obligations specifically set forth in this warranty statement, in no event will Smart-AVI or its third party suppliers be liable for direct, indirect, special, incidental, or consequential damages whether based on contract, tort or any other legal theory and whether advised of the possibility of such damages.

D. Local law

To the extent that this warranty statement is inconsistent with local law, this warranty statement shall be considered modified to be consistent with such law.



NOTICE

The information contained in this document is subject to change without notice. SmartAVI makes no warranty of any kind with regard to this material, including but not limited to, implied warranties of merchantability and fitness for particular purpose. SmartAVI will not be liable for errors contained herein or for incidental or consequential damages in connection with the furnishing, performance or use of this material. No part of this document may be photocopied, reproduced, or translated into another language without prior written consent from SmartAVI Technologies, Inc.

20170210



Designed and Manufactured in the USA

800.AVI.2131

Tel: (818) 503-6200 | Fax: (818) 503-6208
11651 Vanowen St. North Hollywood, CA 91605

SmartAVI.com