

# SignageManager

D I G I T A L   S I G N A G E   S O F T W A R E

## User Manual



Take control of your digital signage  
network with SignageManager

**Smart-AVI**  
SMART AUDIO VIDEO INNOVATION

# Disclaimer

---

## Notice

The information contained in this document is subject to change without notice. Smart-AVI makes no warranty of any kind with regard to this material, including but not limited to, implied warranties of merchantability and fitness for particular purpose.

Smart-AVI will not be liable for errors contained herein or for incidental or consequential damages in connection with the furnishing, performance or use of this material.

No part of this document may be photocopied, reproduced, or translated into another language without prior written consent from Smart-AVI, Inc.

## Limited Warranty Statement

---

### A. Extent of Limited Warranty

1. Smart-AVI, Inc. warrants to the end-user customers that the Smart-AVI product specified above will be free from defects in materials and workmanship for the duration of 1 year, which duration begins on the date of purchase by the customer. Customer is responsible for maintaining proof of date of purchase.

2. Smart-AVI limited warranty covers only those defects which arise as a result of normal use of the product, and do not apply to any:

- a. Improper or inadequate maintenance or modifications
- b. Operations outside product specifications
- c. Mechanical abuse and exposure to severe conditions

3. If Smart-AVI receives, during Applicable warranty period, a notice of defect, Smart-AVI, Inc. will, at its discretion, replace or repair the defective product. If Smart-AVI is unable to replace or repair the defective product covered by the Smart-AVI warranty within a reasonable period of time, Smart-AVI shall refund the cost of the product.

4. Smart-AVI shall have no obligation to repair, replace or refund unit until customer returns defective product to Smart-AVI.

5. Any replacement product could be new or like new, provided that it has functionality at least equal to that of the product being replaced.

6. Smart-AVI limited warranty is valid in any country where the covered product is distributed by Smart-AVI.

# Table of Contents

---

Disclaimer .....	7
Limited Warranty Statement .....	7
Table of Contents .....	3
How to Install SignageManager .....	4
Installing SignageManager .....	4
Running SignageManager for the First Time .....	4
Setting Up the SignageManager Client .....	5
Connecting SignageManager to the Server .....	5
How to Use SignageManager .....	6
Tasks .....	6
Groups .....	7
Advanced Options .....	7

# How to Install SignageManager

---

This quick setup guide will instruct you on how to install and setup the SignageManager software onto your Server (Host PC) and how to setup the SignageManager client. To ensure proper installation of the ServerSoftware, please make sure you are running Windows XP Professional with Service Pack 2, that you are logged in as the System Administrator, and turn off the Windows XP firewall.

## Installing SignageManager

---

SignageManager requires a unique CD key to be installed. You will find your key on the back of the SignageManager CD sleeve. In addition, you must complete the online registration for your copy of SignageManager. If you do not register in the thirty-day window, your SignageManager software will become disabled.

Note: For proper installation of SignageManager software, you must insert the USB protection key provided into any available USB port on your server PC before you install the SignageManager software. Once inserted, Windows will ask for the drivers; you may cancel that request; drivers will be installed during installation of the software.

1. Double click on the SignageManager\_Setup executable. Read the License Agreement then click 'I Agree'
2. Enter in your name and organization and then enter in your unique Serial Number, when entering in the Serial Number given to you, make sure it is typed with ALL CAPS, or registration will not give you a 30 day grace period. Click 'Next'
3. Next window will be to choose components, if you are two options, make sure the first option "SignageManager" is checked and make sure "SignageManager Win Client" is unchecked.
4. Choose the installation location you would like to install the SignageManager software and then click 'Next'.
5. SignageManager will then start to install the files and drivers, during this installation, SignageManager setup will prompt you to install certain programs attached to our installation.
6. When the installation is finished, you will want to create a new user in your Windows XP operating system; new user must have a password and must be an administrator.

Reminder: Make sure Windows XP firewall is disabled. Windows firewall will block communication between your Signage Pro client and Signage Pro server.

## Running SignageManager for the First Time

---

1. Double click on SignageManager Station Manager icon on your desktop.
2. You will first be prompted with a Server Log on settings dialog box, leave the default IP address of 127.0.0.1. In the user name and password fields but the new Windows user and password you have just created for SignageManager, and hit 'Ok'.
3. SignageManager Station Manager is now loaded. You will see a white box that will show the connected SignageManager clients, you will also see Station Mgr with the loopback IP (127.0.0.1) with the user name you just connected with. Once you connect the SignageManager client, you will see it here in this list of connected clients.

## Setting up the SignageManager Client

---

SignageManager client software is based on Gentoo Linux. When you first boot up the client, you may access the BIOS to setup your client date and time. SignageManager splash screen will appear after you see the boot up and POST. During the splash screen an F2 option will appear, you have a few seconds to press F2 and select your monitor resolution and calibrate touch screen monitors.

Use the following keys to navigate:

ALT + CTRL + 1: Show this help message.

ALT + CTRL + 2: Allows you to setup the Signage options; which as login username and password, IP setup and.

ALT + CTRL + 3: Allows you to setup your network configuration. If your network uses DHCP you will not need to set up anything under this option, if you want your client to stay static or you are going over the WAN, you will setup your entire network here.

ALT + CTRL + 4: Brings you to the 'SignageManager Information Window' that will show you; the time, date and the download status of your media content, the current version of SignageManager and If you are connected or disconnected from the Server.

ALT + CTRL + 5: Allows the user to use the Linux terminal.

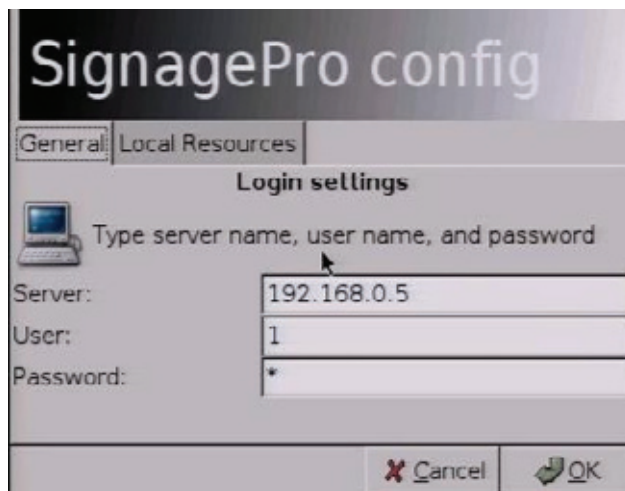
ALT + CTRL+6: Unmount USB flash disks.

ALT + CTRL + 9: Shuts down and turns off the SignageManager client.

## Connecting SignageManager to the Server

---

1. On the Signage Pro client hit the ALT + CTRL + 2 key. It will bring up the SignageManager config window. In this window you have to edit a few options.



Server: You want to edit this field with the private IP address of the SignageManager server, where you installed PresenterNET onto:

User: This is the user name of a user on your PC server computer that is dedicated to SignageManager.

Player Name: This is where you name you SignageManager client so you can identify is easier on the Server. You will see this name on the Station Manager and when you start groups.

Password: Password of the user name on the PC server.

Note: You must have a user name and password to connect the SignageManager client to the SignageManager(Pres NET) server.

2. If everything was setup correctly on both the server and the client, you should open up the SignageManager Station Manager on the Server PC. You should see Station Manager with the default 127.0.0.1 IP address and the client that says presenter\_user with the client IP address. If you see the client IP address then, the communication between server and client is established and Signage Pro is ready for use. If you are not making a connection, PING the server to the client in the DOS command prompt and then ping the client to the server in the terminal window.

# How to Use SignageManager

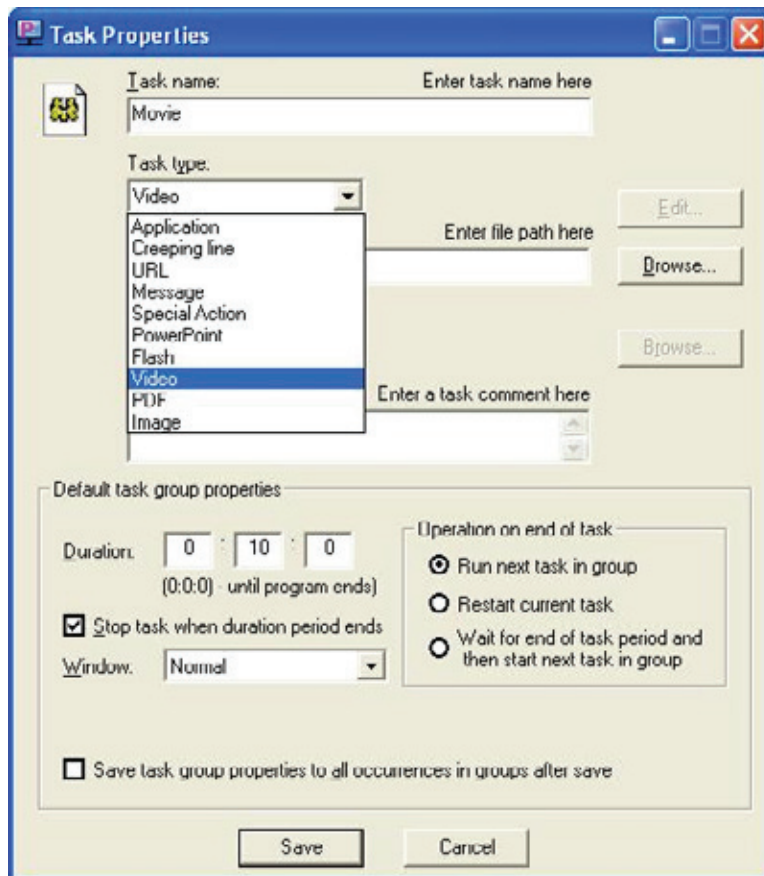
The main function you want to use is the Task Manager. You will setup all your presentations here, and will also start them and stop them from the Task Manager. To open task manager: Run Programs->Presenter2->Presenter2 Task Manager or from the Station Manager click Run and then Task Manager.

'Tasks' are individual presentations such as a movie, a PowerPoint file and Flash; in order to run a Task it must be placed in a group.

'Groups' are used to schedule a Task or a series of Tasks to run together at a scheduled time.

## Tasks:

In the 'Task' menu option, you may create, delete, and view the properties of processes you wish to run on Presenter NET. Selecting 'New' from the 'Task' menu brings up a blank 'Properties' window: with this you may create a new Task to run in a schedule within a group of tasks or alone. After naming the Task, choose the 'Type Task' the program requires. Under 'Task Type' you will see different types of content you can run, Flash, PowerPoint, Video, Images. To run a program, such as a movie 'Video'. In the command line box, browse for a video file with the extensions it allows.



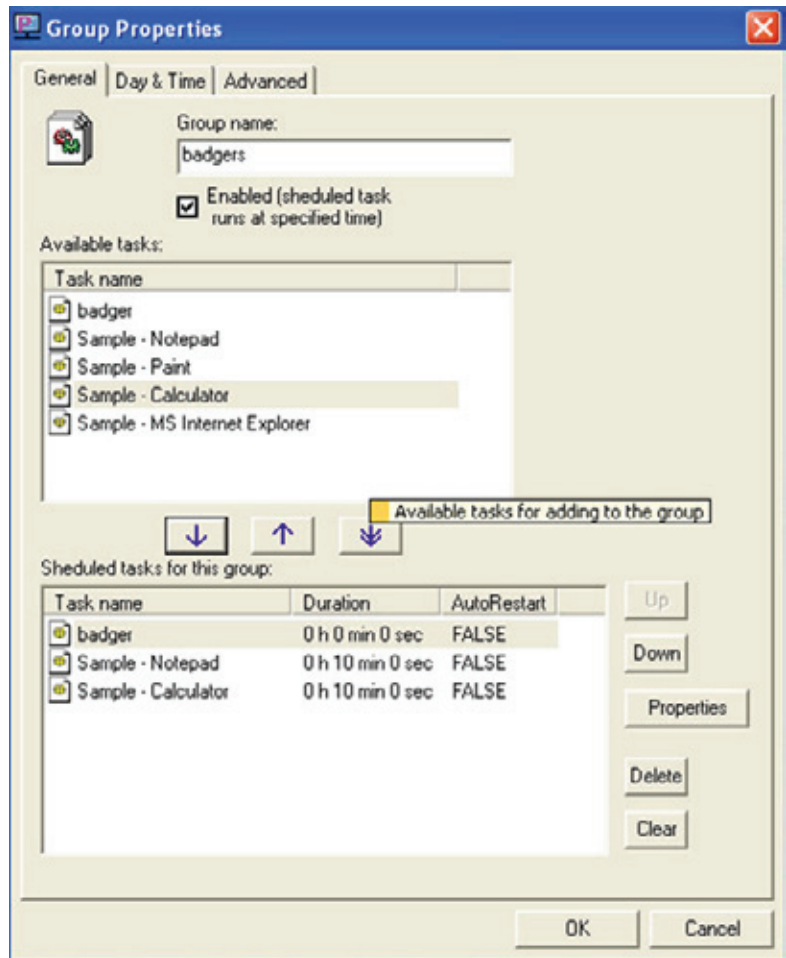
1. Name the Task.
2. Find content type, such as a movie, select Video under Task Type, click browse, and look for the movie or video file you want to run.
3. Enter in a comment if desired.
4. Edit duration of the task. This isn't important here; you can edit this in the group.
5. Click Save.

Under 'Default Task Properties', you may set the length of time you wish for the program to run (in hours, minutes, and seconds) in the boxes next to 'Duration'. Using the value '0' for all boxes will cause the program to run indefinitely. With the 'Window' list box, you may choose the size of the window in which the task will run. Under 'Operation on End of Task', you may set what will happen upon completion of the Task if it is included in a group. The first value, 'Run Next Task', will open up the next task in the group upon completion. 'Restart Current Task' will cause the task to repeat itself. You may delete a Task or edit its settings at any time by using the 'Task' menu.

# How to Use SignageManager

## Groups:

Once you are satisfied with the tasks you have in the group, you may schedule when the Group will run by selecting the "Day & Time" tab. To schedule the Group to run at certain times on certain days, select 'Run Periodically.' Otherwise, you may choose to run the Group only when manually selected or only when users first login. To run group manually, right click on selected Group and click Start group, Group duration still must be set to run for a certain amount of time. You may use the Days of the Week to choose on what days it will run and even what months it will run in the 'Months' list. You can also list days of the month by date with the 'Day of the Month' box, and likewise for 'Years.' Under 'Group start time,' you may specify what time the Group starts. The 'Run later, if it was impossible to run on schedule' will ensure the Group runs in the event that a computer error, a crash or the computer being simply shut off during the start time happens to occur. 'Duration' specifies how long the Group will run for. Enabling 'Loop group during duration period' repeats the Groups' task cycle for as long as the duration is set. 'Stop group when duration period ends' will halt the group at the end of the time period, wherever it may be in its Task list.



Edit Task duration for group by clicking on the Task in the 'Scheduled Tasks for this group' list and click Properties, this will only change the Task duration for this group, the same Task in other groups will not be changed.

## Advanced Options

The 'Advanced' tab allows you to determine on which Stations the Group will run. Simply check the 'Use station filter' box and highlight the Stations on which you want the group to run. The 'User List' enables you to limit the user logins that the Group will run on by clicking 'Use user filter'.

To start/stop a group, right click on group name or have the Time & Date Set.

**Note:** Once media and group lists have been downloaded from the Server to the SignageManager client, a connection from the Server to the Client is no longer needed if desired, SignageManager can play groups without having a connection, if connection is lost or you choose to disconnect your network. Once you reconnect your network SignageManager will automatically connect and if groups have been changed, it will automatically download the updated groups and media content.



Smart-AVI, Inc.  
2840 N Naomi Ave.  
Burbank, CA 91504  
Tel: (818)565-0011  
Fax: (818)565-0020  
Email: [info@Smart-AVI.com](mailto:info@Smart-AVI.com)  
[www.Smart-AVI.com](http://www.Smart-AVI.com)