

MXWALL-LT

4-INPUT UP TO 12-OUTPUT VIDEO WALL PROCESSOR AND MATRIX SWITCH



**ALL-IN-ONE VIDEO WALL AND MATRIX SOLUTION WITH 1080P FULL HD RESOLUTION OUTPUT,
INTEGRATED CONVERTER & SCALER, FLEXIBLE CREATIVE CONFIGURATION MODES,
AND USER FRIENDLY CONTROL SOFTWARE!**

FEATURES

- Complete hardware solution
- Plug-and-play ready
- 4-8 HDMI Inputs
- Up to 12 HDMI Outputs
- Supports DVI with adaptors
- 1080p (1920x1080 @ 60Hz) Output Resolution
- Creative video wall display modes
- Easy control (front-panel, software, and RS-232)
- HDCP and HDMI 1.4 compliant
- User-Friendly MXWall Manager Software
- For 4x8, 8x8, and 4x12 video wall setups

APPLICATIONS

- Corporate or Educational Presentations
- Airport Installations
- Wall Displays
- Digital Signage
- Dealer Rooms
- Control Rooms
- Shopping Centers
- Security
- Point-of-Sale Retail
- Entertainment Venues
- Corporate Lobbies
- Restaurants



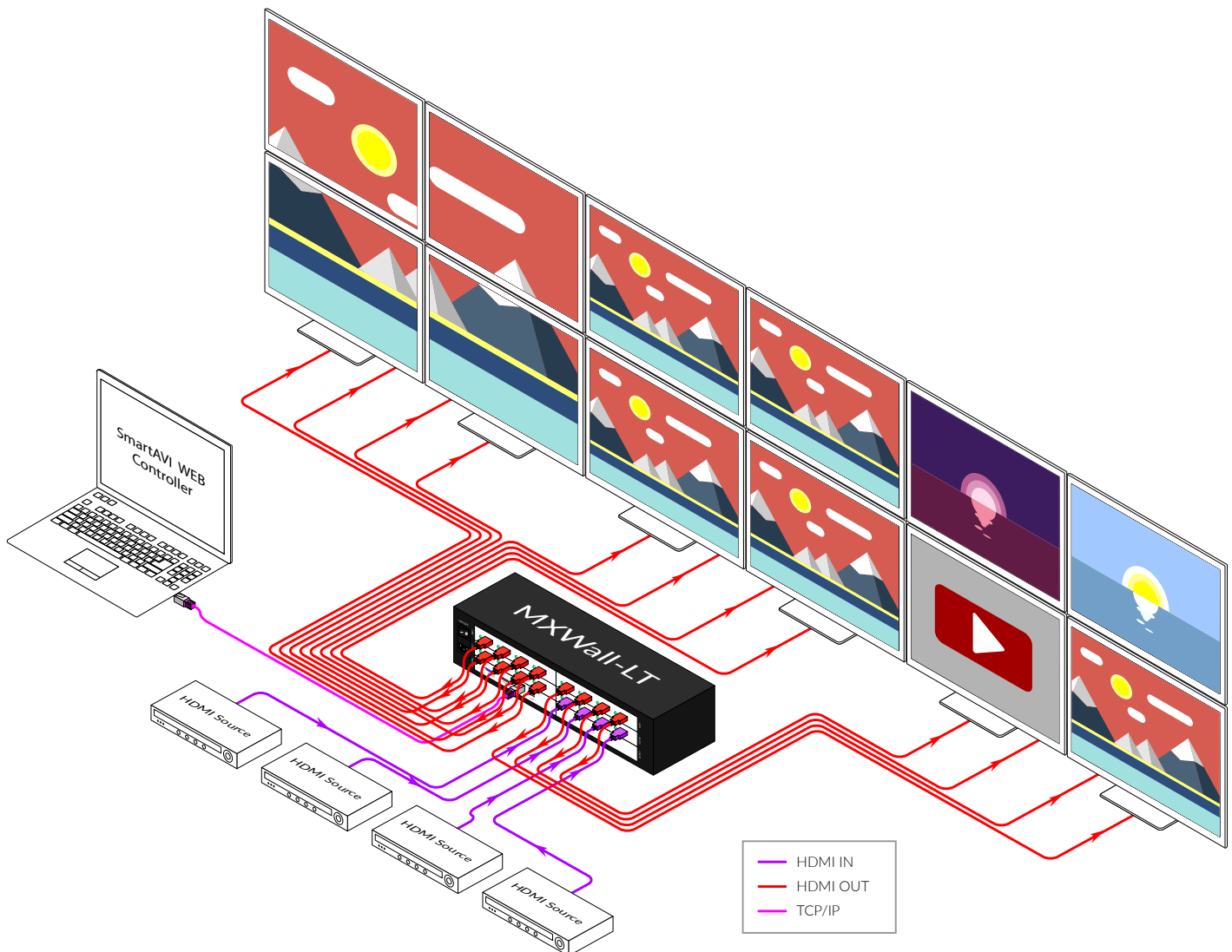
Designed and Manufactured in the USA

OVERVIEW

The MXWall-LT is a video wall processor and matrix switch with up to 12 HDMI outputs. Compact, plug-and-play, and excellent for mid-sized video wall displays between 4-12 screens with resolutions up to 1080p (1920x1080 @ 60Hz) Full HD.

The MXWall-LT is simple to control, outfitted with easy front-panel buttons and optional RS-232 control. Better still, the MXWall-LT comes with SmartAVI's intuitive MXWall Manager software absolutely free! MXWall Manager software let's users manually create and adjust their ideal video wall displays using simple click-and-drag operation: it's fun and great for users of any technical skill level! Users can choose from a number of great pre-configured screen modes as well, displaying content in full video wall, four-screen quad, and individual screen modes with the press of a button. The MXWall-LT also features TCP/IP web control for LAN-connected units, so users can control the contents of the video wall from the comfort of a PC workstation.

Its compact design and powerful processing power makes the MXWall-LT the perfect solution for any video wall installation. Plug-and-play, the LT is immediately ready for use as soon as it is connected to an AV set-up: no additional drivers or installers required. Better still, its exceptional hardware makes for stunning video wall displays in environments like retail spaces, educational facilities, conference rooms, command centers, event halls, entertainment venues, airports, and more!



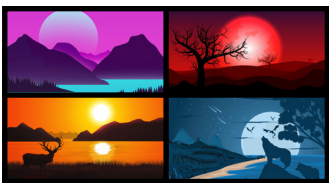
AVAILABLE CONFIGURATIONS

The MXWall-LT features a robust selection of display configurations that makes crafting your ideal multi-screen presentations effortless and effective!



VIDEO WALL MODE

Project video from a single input source to every screen on your video wall for an impressive 1080p HD display!



INDIVIDUAL MODE

Create dynamic video collages by sending video source signals individually from each input to any output on your video wall.

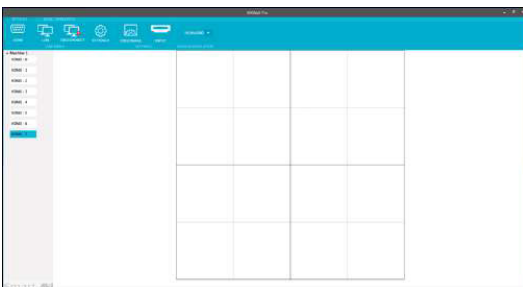


QUAD MODE

Project video from a single input source to any four connected screens in your video wall. These attractive quad configurations are a great way to add variety to your displays!

MXWALL MANAGER SOFTWARE

The MXWall-LT also comes with SmartAVI's intuitive MXWall Manager software, which allows users to create amazing video wall displays in minutes. Its click-and-drag operation and simple layout ensure managing video walls is easy and effective every time!



EASY TO USE

The MXWall Manager software features a streamlined layout that keeps things simple and clear. Our intuitive menus and settings interface ensure set-ups always are easy and stress-free. Choose from settings like aspect-ratio, rows, columns, video sources, and more! Adjust resolutions, scaling, and active monitors on the fly. Not happy with your current configuration? Just clear the workspace and start fresh: it's that simple!

FULLY CUSTOMIZABLE

Take your pick of any of our versatile display modes. Select any screen and input the source you would prefer. Even multiple video sources can share a single screen with *INDIVIDUAL* and *QUAD* display modes. The possibilities are as endless as your creative potential!



FRONT AND BACK



MXWall-LT (4x12) Rear



MXWall-LT (4x12) Front

TECHNICAL SPECIFICATIONS

VIDEO	
Video Amplifier Bandwidth	3.2 G
Input Video Signal	Video (TMDS) 0.5~1.0Vpp
Input DDC Signal	5 volts
Compliances	HDMI 1.4, HDCP
Pixel Rates	Clock frequency beyond 165Mpix/second
Format	4:4:4 and 4:2:2 data input formats
Resolution	480p, 720p, 1080i, 1080p
Input Card Format	4-port HDMI card
Output Card Format	4-port HDMI card
Input Slots	Up to 8 (2 cards)
Output Slots	Up to 12 (3 cards)
Video Type	RGB/YCBCR : 24/30/36-bits,YCBCR: 8/10/12/16/20/24-bits

CONTROLS	
Front	Front-panel tactile switch buttons
RS-232	9600bps, Software flow DB9 Female
TCP/IP	Telnet

OTHER	
Working Temperature	0°C~+55°C
Storage Humidity	10%~90%
Weight	20 lbs
Dimensions	17 in (W) x 3.5 in (H) x 15 in (D)
Power Supply	50/60Hz, 100~230 VAC
Consumption	300W

MXWALL MANAGER SOFTWARE	
Operating System	Windows 7-10, Android

PART NO.	DESCRIPTION
MXWALL-LT-S	4-Input 12-Output Video Wall Processor and Matrix Switch. Includes: [MXWALL-LT, (CCPWR06)]

www.smartavi.com

Tel: (800) AVI-2131 • (702) 800-0005
2455 W Cheyenne Ave, Suite 112
North Las Vegas, NV 89032

Smart-AVI
SMART AUDIO VIDEO INNOVATION