

# MXWALL-PRO

REAL-TIME VIDEO WALL PROCESSOR AND MATRIX SWITCH



EXPANDABLE HDMI VIDEO WALL AND MATRIX SOLUTION: ROUTE 64 1080P HD SOURCES TO 64 DISPLAYS WITH INTEGRATED SCALER, STORAGE, AND CREATIVE PICTURE MODES

## FEATURES

- Complete hardware solution
- Plug-and-play ready
- Expandable HDMI inputs and DVI outputs (up to 32x32)
- 1080p (1920x1080 @ 60Hz) Output Resolution
- Flexible video wall display configurations
- Reliable 24/7 Uninterrupted Use
- Easy control and access
- HDCP and HDMI 1.4 compliant
- User-Friendly MXWall Manager Software

## APPLICATIONS

- Corporate or Educational Presentations
- Airport Installations
- Wall Displays
- Digital Signage
- Dealer Rooms
- Control Rooms
- Shopping Centers
- Security
- Point-of-Sale Retail
- Entertainment Venues
- Corporate Lobbies
- Restaurants



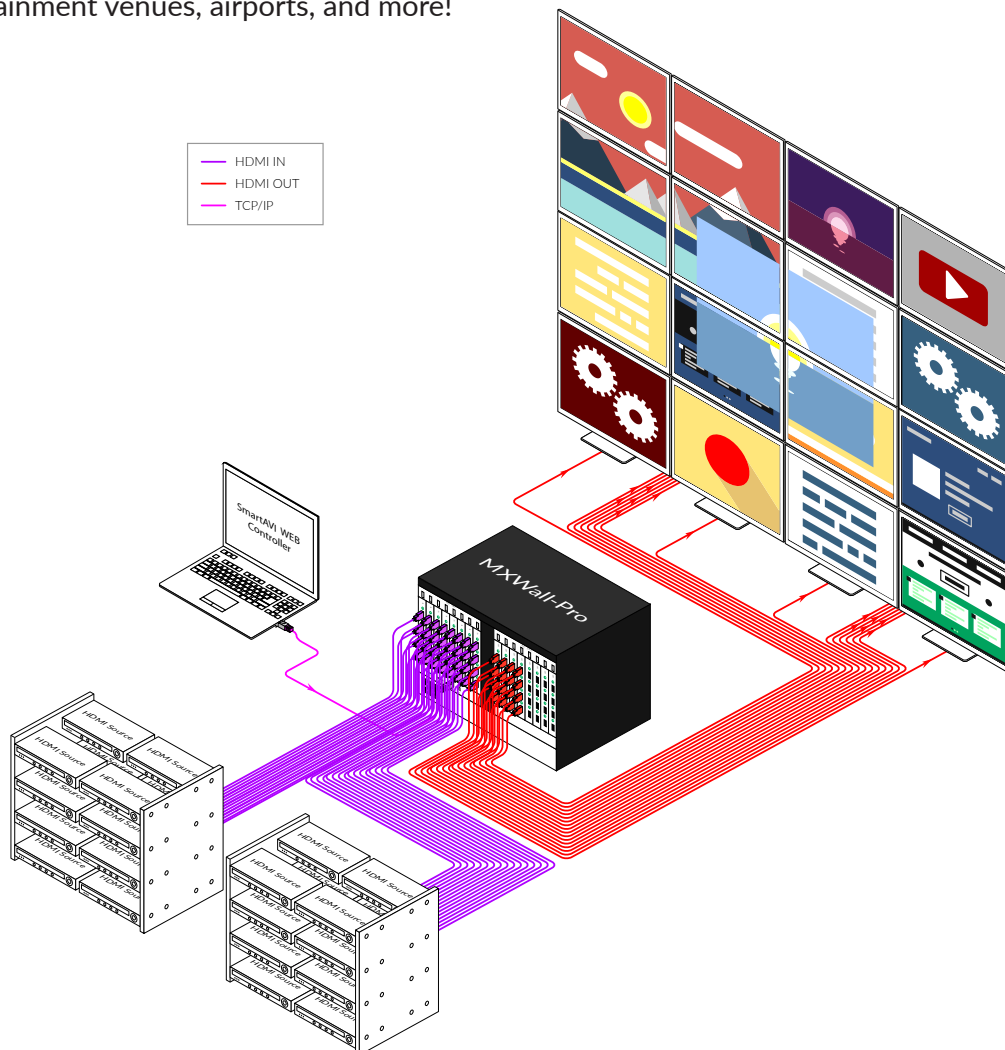
Designed and Manufactured in the USA

# OVERVIEW

The MXWall-Pro is a video wall processor and matrix switch with up to 32 full UHD inputs and outputs, an integrated converter and scaler. Compact, plug-and-play, and excellent for mid-sized video wall displays between 16 screens with resolutions up to 4K (3840x2160 @ 24 Hz/25 Hz/30 Hz/50 Hz/60 Hz) Full UHD.

The MXWall-Pro is simple to control, outfitted with easy front-panel buttons and optional RS-232 control. Better still, the MXWall-Pro comes with SmartAVI's intuitive MXWall Manager software absolutely free! MXWall Manager software let's users manually create and adjust their ideal video wall displays using simple click-and-drag operation: it's fun and great for users of any technical skill level! Users can choose from a number of great pre-configured screen modes as well, displaying content in full video wall, four-screen quad, and individual screen modes with the press of a button. The MXWall-Pro also features TCP/IP web control for LAN-connected units, so users can control the contents of the video wall from the comfort of a PC workstation.

Its compact design and powerful processing power makes the MXWall-Pro the perfect solution for any video wall installation. Plug-and-play, the MXWall-Pro is immediately ready for use as soon as it is connected to an AV set-up: no additional drivers or installers required. Better still, its exceptional hardware makes for stunning video wall displays in environments like retail spaces, educational facilities, conference rooms, command centers, event halls, entertainment venues, airports, and more!



User defined custom displays can be created with supplied software: users can populate individual screens with multiple inputs. Add any of the 64 input signals to play along side others within a single display.

# AVAILABLE CONFIGURATIONS

The MXWall-Pro's robust selection of display configurations bring imaginative multi-screen collages to life!



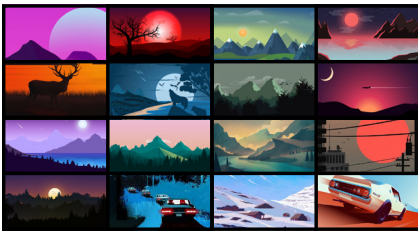
## VIDEO WALL MODE

Users can stretch the input image across 4 to 64 HD screens with screen resolution of 1920x1080.



## QUAD MODE

Split each individual screen into four proportional sections, each displaying one of any 64 input images.

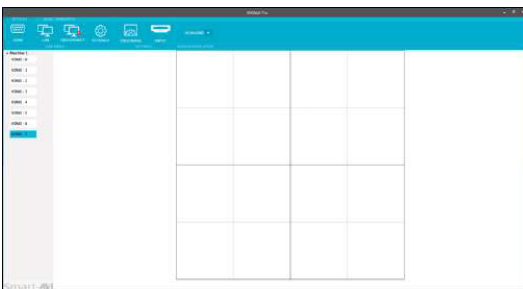


## INDIVIDUAL MODE

Users can route individual input images to each display individually.

# MXWALL MANAGER SOFTWARE

The MXWall-Pro also comes with SmartAVI's intuitive MXWall Manager software, which allows users to create amazing video wall displays in minutes. Its click-and-drag operation and simple layout ensure managing video walls is easy and effective every time!



## EASY TO USE

The MXWall Manager software features a streamlined layout that keeps things simple and clear. Our intuitive menus and settings interface ensure set-ups always are easy and stress-free. Choose from settings like aspect-ratio, rows, columns, video sources, and more! Adjust resolutions, scaling, and active monitors on the fly. Not happy with your current configuration? Just clear the workspace and start fresh: it's that simple!

## FULLY CUSTOMIZABLE

Take your pick of any of our versatile display modes. Select any screen and input the source you would prefer. Even multiple video sources can share a single screen with INDIVIDUAL and QUAD display modes. The possibilities are as endless as your creative potential!



# FRONT AND BACK



MXWall-Pro Rear



MXWall-Pro Front

# TECHNICAL SPECIFICATIONS

VIDEO	
Video Amplifier Bandwidth	3.2G
Input Video Signal	Video (TMDS) 0.5~1.0Vpp
Input DDC Signal	5 volts
Compliances	HDMI 1.4 and HDCP
Pixel Rates	Clock frequency beyond 165Mpix/second
Format	4:4:4 and 4:2:2 data input formats
Resolution	480p, 720p, 1080i, 1080p
Input Card Format	HDMI, DVI
Output Card Format	HDMI, DVI
Input Slots	Up to 8 cards (4 inputs each)
Output Slots	Up to 8 cards (4 outputs each)
Video Type	RGB/YCBCR : 24/30/36-bits, YCBCR: 8/10/12/16/20/24-bits

CONTROLS	
Front	State Display with push buttons
RS-232	9600bps, Software flow DB9 Female
TCP/IP	Webserver, Telnet

OTHER	
Working Temperature	0°C~+55°C
Storage Humidity	10%~90%
Weight	30 lbs
Dimensions	17.125 in (W) x 12 in (H) x 12 in (D)
Power Supply	50/60Hz, 100~230 VAC
Consumption	300W

PART NO.	DESCRIPTION
MXWALLPRO-S	HDMI, DVI Real-Time Matrix with Integrated Video Wall. Includes: [MXWall-Pro, (CCPWR06)]