

# HDR-8X8-XT

4K ULTRA-HD 8X8 HDMI MATRIX WITH POE



**DISTRIBUTE EIGHT 4K HDMI SOURCES TO EIGHT LOCAL MONITORS AND EIGHT REMOTE DISPLAYS VIA CAT5E/6 WITH IR AND TCP/IP CONTROL SUPPORT**

## FEATURES

- Up to 4K (3840x2160 @30Hz) Resolution
- (8) HDMI Input
- (8) HDMI Local Output
- (8) HDMI Output (over CAT5e/6)
- Supports Power-over-Ethernet (POE)
- signal extension up to 328 ft
- Ethernet routing: connect output displays to internet via CAT5e/6
- HDMI 2.0 & HDCP Compliant
- Route RS-232 control to remote monitors
- Supports bi-directional IR remote control
- Supports TCP/IP Web Console control
- EDID learning & management
- Supports HDX-POE receivers: Video & IR extension (sold separately)
- Supports HDX-POE-PRO receivers: video, IR, RS-232, and Ethernet extension (sold separately)

## APPLICATIONS

- Sporting Arenas
- Multiplex Cinemas
- Concert Halls
- Nightclubs
- Convention Centers
- Lecture Halls
- Auditoriums
- Hotel Lobbies
- TV Stations
- Retail Electronics Stores



Designed and Manufactured in the USA

# OVERVIEW

The HDR-8x8-XT is an 8x8 matrix switch that sends 4K (3840x2160 @30Hz) HDMI signals to output devices up to 328 ft away with CAT5/6 extension.

Ideal for large venues with multiple 4K-ready screens, the HDR-8x8-XT offers unmatched performance and quality over considerable distances. Arenas, movie theaters, concert venues, nightclubs, event halls, convention centers, and more are all perfect environments for the HDR-8x8-XT.

Controlling the HDR-8x8-XT is both easy and flexible! The matrix features simple front-panel buttons for direct switching and bi-directional IR remote control. The HDR-8x8-XT can also be controlled using a TCP/IP web console accessible by PC when connected to the matrix over Ethernet. No matter the application or environment, the HDR8x8-XT is always accessible and in command.

Featuring Power-over-Ethernet support, the HDR-8x8-XT powers connected receiver units (like the HDXPOE) through CAT5e/6 cables, cutting costs and power consumption. It also features EDID learning and HDCP management for easy set-up!

For powerful matrix routing without the hassle of complicated extension, turn to HDR-8x8-XT 4K 8x8 matrix today!

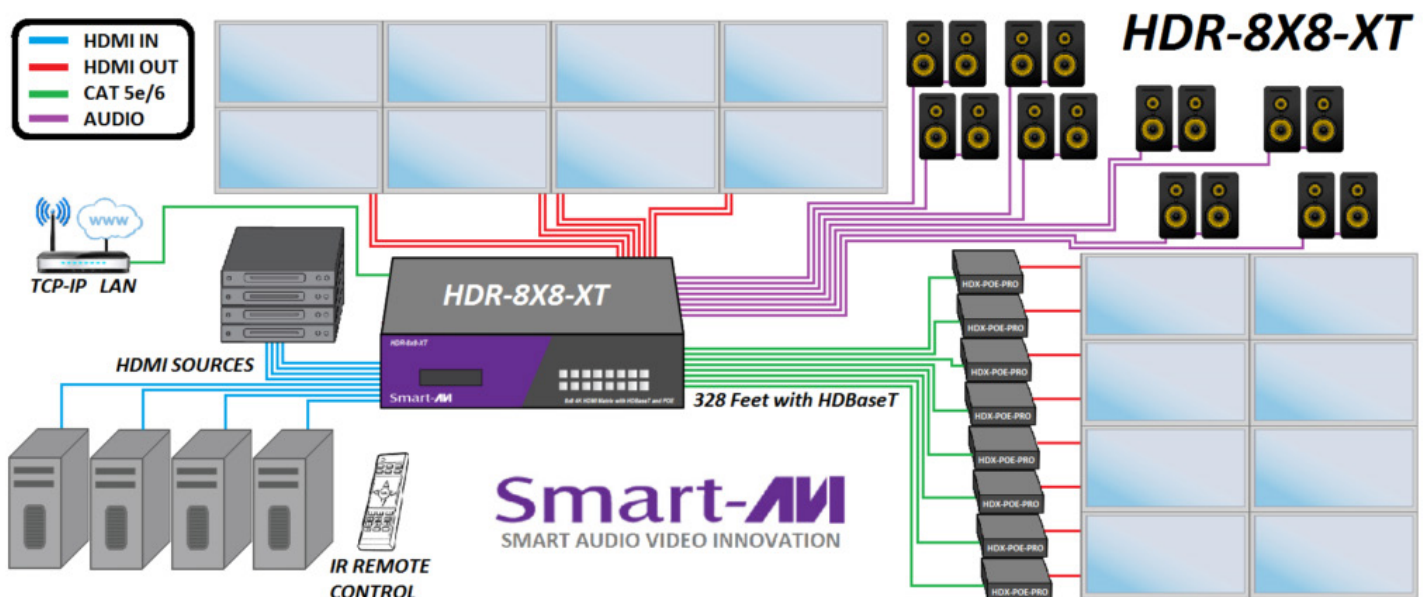
# THE 4K ADVANTAGE

Ideal for large-scale screens and projectors, 4K ultra-HD video content is quickly gaining ground as the go-to in visual presentation.

Outfitted with 4K-ready HDMI connectors, the HDR-8x8-XT lives up to its label, delivering the pinnacle in image clarity and performance. At 3840x2160, 4K resolution is terrific for displaying elaborate dioramas and scenes of all kinds. From movies to live events, 4K video enthalls an audience and brings what they are watching to life in vivid detail!

# ETHERNET ROUTING

The HDR-8x8-XT connects up to eight smart TVs to the internet via Ethernet switch, saving users valuable setup costs and times otherwise spent on hooking each display up to separate internet routers. Keep your displays web-connected and convenient with the HDR-8x8-XT!



# CONTROL VIA ETHERNET

HDR-8X8-XT TCP/IP control is a feature that allows source / display switching, EDID configuration and Network settings to be controlled remotely via HTTP. Manage your HDR-8X8-XT with ease from anywhere in the world. Make sure the HDR-8X8-XT RJ45 PC Control port is connected to your network. First you must find the IP address. Download the HDR-8X8-XT IP-Finder2 software from <http://smartavi.com/helpful-links.html>

Once you have unzipped it onto your PC, execute the software and you should see a window like the one shown in Figure 3-1.

Click the [Search Device] button. The IP address for the HDR-8X8-XT should appear.

Enter the IP address into a web browser of your choice. You should see the HDR-8X8-XT Matrix Control Page as shown in Figure 3-2.

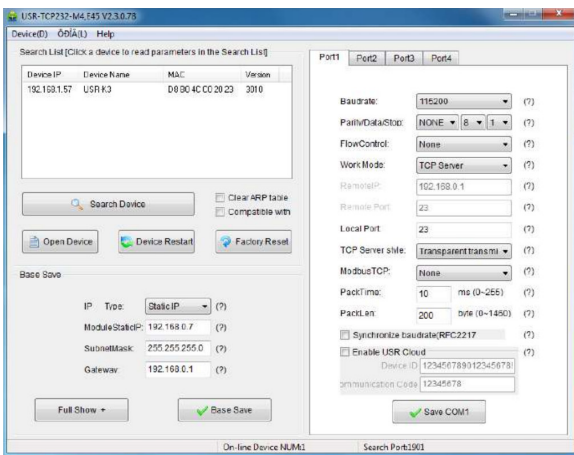


Figure 3-1

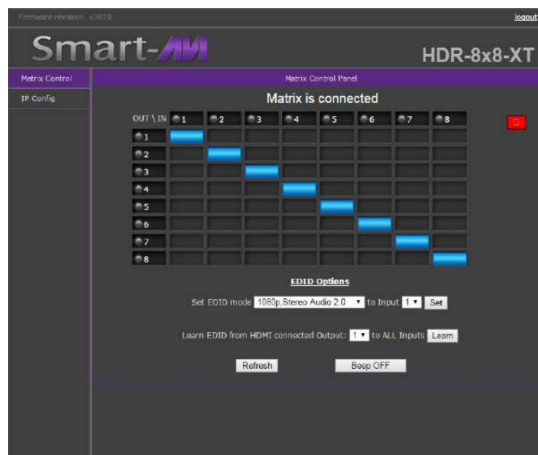


Figure 3-2

The Matrix Control Page is where you switch inputs to outputs. The column running top to bottom on the left shows the 8 outputs. The Top row shows the inputs or sources. Clicking the box where the input intersects the output sets the connection.

Figure 3-3 shows input or source 1 connected to outputs 1,2,3 & 4. Output 5 is connected to Input 5, 6 to 6, 7 to 7 and 8 to 8.

You can also change EDID settings from the Matrix Control Page. See the EDID section of this manual for more information on EDID.

The IP Config page shown in Figure 3-4 allows you to modify the network settings.

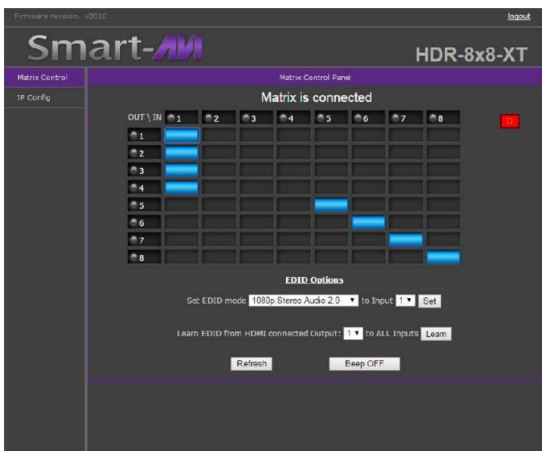


Figure 3-3

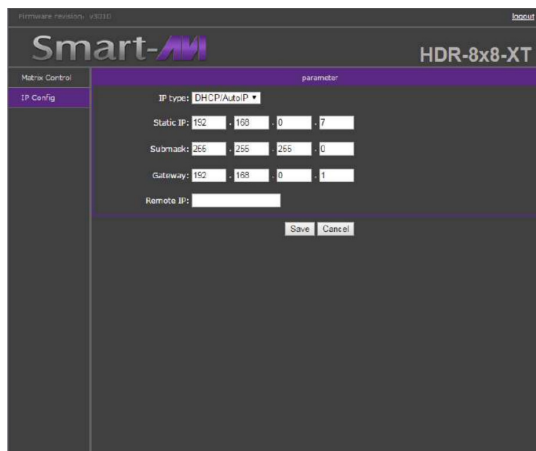


Figure 3-4

# TECHNICAL SPECIFICATIONS

VIDEO & AUDIO	
Format	HDMI 1.4
Video Bandwidth	10.2Gbps
Input Interface	(8) HDMI
Output Interface	(8) HDMI, (8) CAT5e/6, (8) 3.5mm stereo jack, (8) coaxial audio
Input Resolution	Up to 4K (3840x2160 @ 30Hz)
Output Resolution	Up to 4K (3840x2160 @ 30Hz)
HDMI Connector	Type A 19 pin female
RJ-45 Connector	WE/SS 8P8C
Audio Connectors	3.5mm, Coaxia

OTHER	
Front Panel	Front panel buttons
IR	Infrared Remote Control
TCP/IP Control	Via Ethernet-connected computer

OTHER	
Power	Internal 100-240 VAC/CCPWR06
Max Consumption	100W
Dimensions	17" W x 14.6" H x 4.0" D
Weight	14.9 lbs. Unit only
Approvals	UL, CE, ROHS Compliant
Operating Temperature	0 to +40°C (+32° to +104° F)
Storage Temperature	-20° to +60°C (+20° to +140° F)
Humidity	Up to 95% (Non-condensing)

PART NO.	DESCRIPTION
HDR-8x8-XT-S	4K-Ready 8x8 HDMI Matrix with CAT5/6/7, Includes: [HDR-8x8-XT, IR Remote & (CCPWR06)]

[www.smartavi.com](http://www.smartavi.com)

Tel: (800) AVI-2131 • (702) 800-0005  
 2455 W Cheyenne Ave, Suite 112  
 North Las Vegas, NV 89032

**Smart-AVI**  
 SMART AUDIO VIDEO INNOVATION