

# MXWALL XT2

4-INPUT AND UP TO 12-OUTPUT VIDEO WALL PROCESSOR AND MATRIX SWITCH



## USER MANUAL



Designed and Manufactured in the USA

**Smart-AVI**

1-800-284-2131  
[www.smartavi.com](http://www.smartavi.com)

# OVERVIEW

TECHNICAL SPECIFICATIONS	3
WHAT'S IN THE BOX?	4
FRONT AND BACK	4
HARDWARE INSTALLATION	5
AVAILABLE CONFIGURATIONS	6
FRONT PANEL CONTROL	7
SOFTWARE INSTALLATION	8-9
USING THE SOFTWARE	10-16
TROUBLESHOOTING	17
TECHNICAL SUPPORT	17
LIMITED WARRANTY STATEMENT	18

# TECHNICAL SPECIFICATIONS

MODEL	P20 Series	P40 Series
Classic Size	2U, 3U, 6.5U, 11U, 20U	2.5U, 4U, 6.5U, 11U, 20U
Input Interface Number	8/8, 16/24, 36/48, 76/88, 152/176	16/20, 32/40, 36/48, 76/88, 152/176
Output Interface Number	12/8, 18/12, 36/24, 72/60, 144/120	9/8, 18/12, 36/24, 72/60, 144/120
Input Interface Type	DVI / HDMI / DP / VGA / YPbPr / CVBS / SDI / IP / HDBaseT	DVI / HDMI / DP / VGA / YPbPr / CVBS / SDI / IP / HDBaseT
Output Interface Type	HDMI / DVI / IP	HDMI / DVI / IP
Input Resolution	1920 x 1200 @ 60Hz, 4092 x 2160 @ 30Hz	1920 x 1200 @ 60Hz, 4092 x 2160 @ 30Hz
Output Resolution	1920 x 1200 @ 60Hz	1920 x 1200 @ 60Hz
Image Layer in Each Display	2	4
Control Method	Front panel touch screen, RS232, IP	Front panel touch screen, RS232, IP

## VIDEO

Video Amplifier Bandwidth	3.2Gbps
Input Video Signal	Video (TMDS) 0.5~1.0Vpp
Input DDC Signal	5 volts
Compliances	HDMI 1.4 and HDCP
Pixel Rates	Clock frequency beyond 165Mpix/second
Format	4:4:4 and 4:2:2 data input formats
Input Card Format	4-port HDMI or DVI
Output Card Format	4-port HDMI or DVI
Video Input	Up to 3 cards *
Video Output	Up to 3 cards *
Video Type	RGB/YCBCR : 24/30/36-bits,YCBCR: 8/10/12/16/20/24-bits

## CONTROL

Front	2x8 keyboard with 4x40 LCD
RS-232	DB9 Female, 115200 BPS, N, 8, 1, No flow control
Network	RJ45, UDP

## OTHER

Power Adapter	50/60Hz, 100~240 VAC
Dimensions	17 in (W) x 3.5 in (H) x 15 in (D)
Weight	20 lbs
Operating Temperature	32-122 °F (0-50 °C)
Storage Temperature	-4-149 °F (-20-65 °C)
Humidity	Up to 95% (No Condensation)
Emulation	Keyboard, Video and Mouse

# WHAT'S IN THE BOX?

PART NO.	Q-TY	DESCRIPTION
MXWALL-XT2-S	1	4-Input 12-Output Video Wall Processor and Matrix Switch
CCPWR06	1	Power supply cord
	1	User Manual

## MXWALL XT2 FRONT

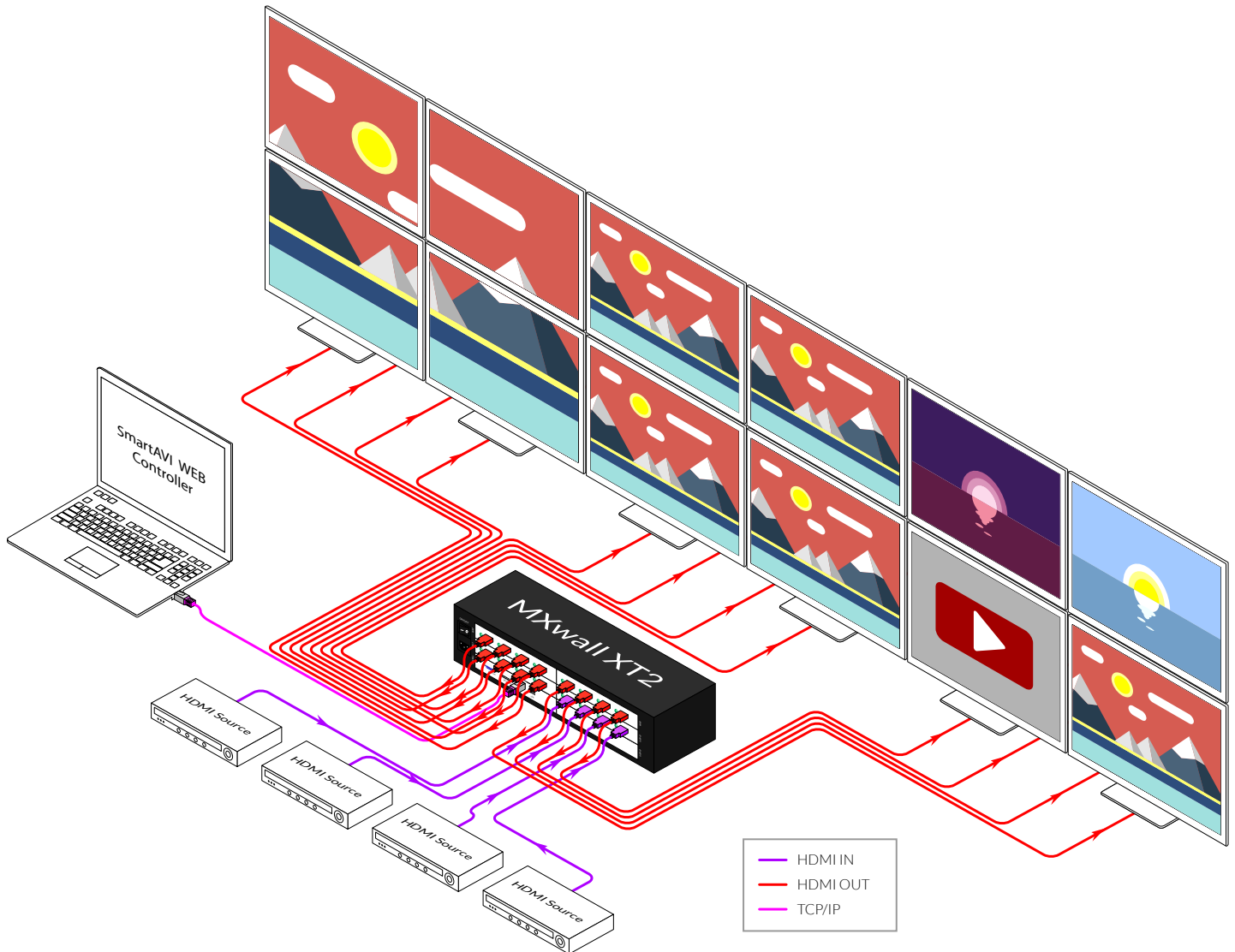


## MXWALL XT2 BACK



# HARDWARE INSTALLATION

1. Position MXwall XT2 conveniently and keep it unplugged.
2. Connect displays to the MXwall XT2 and power on the displays.
3. Connect any video source to the MXwall XT2.
4. Optionally connect an RS-232 cable from a PC to the RS-232 port on the unit for additional control.
5. Optionally connect an Ethernet cable to the MXwall XT2 for additional control.
6. Turn on the MXwall XT2 and wait a few seconds for the unit to initialize.



# AVAILABLE CONFIGURATIONS

It is easy to create different configurations or modes that are easy to navigate through with the MXwall XT2. There are endless possibilities. Creating and switching between display modes is simple. Front panel buttons, on-screen-display, RS-232, and TCP/IP can be used to switch between modes at will.



## VIDEO WALL MODE

Users can stretch an input image across 4 to 12 HD screens with screen resolution of 1920 x 1080.

## INDIVIDUAL MODE

Users can route individual input images to each display individually.



## QUAD MODE

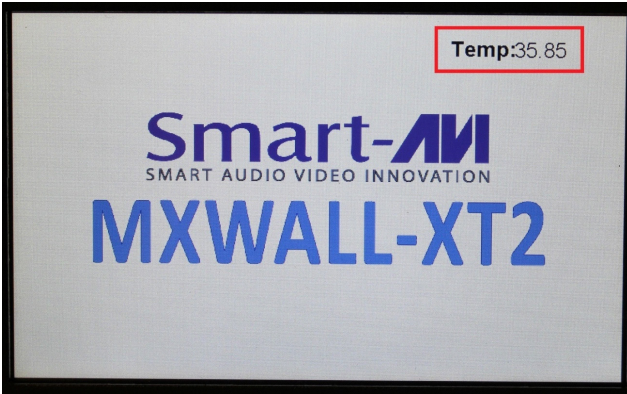
Create 4 four proportional sections, each displaying one of any 4 input images.

## User defined custom displays can be created with supplied software

Users can populate individual screens with multiple inputs. Add any of the input signals to play along side others within a single display.



# FRONT PANEL CONTROL



The MXwall XT2 front panel displays the temperature of the unit in degrees Celsius in order for users to monitor and prevent overheating.

Many settings can be changed from the Setup page of the touchscreen front panel by clicking the white bar next to the settings name. Please note that the baud rate and language cannot be changed.

Buzzer: Turn the buzzer on or off.

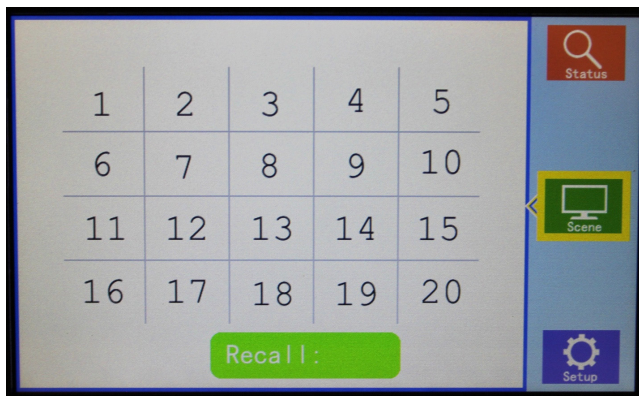
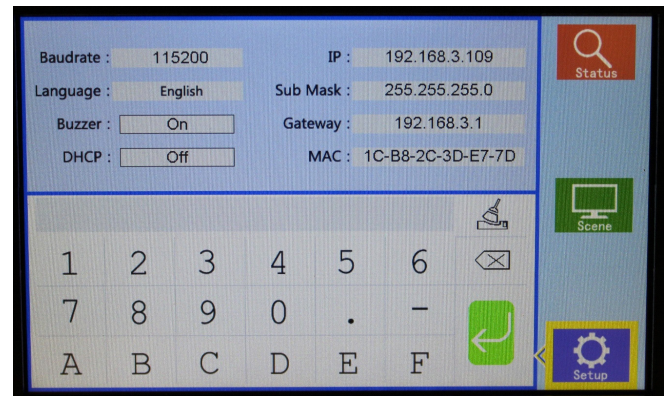
DHCP: Turn Dynamic Host Configuration Protocol on or off

IP address: Set a static IP address

Subnet mask: Set a custom subnet mask

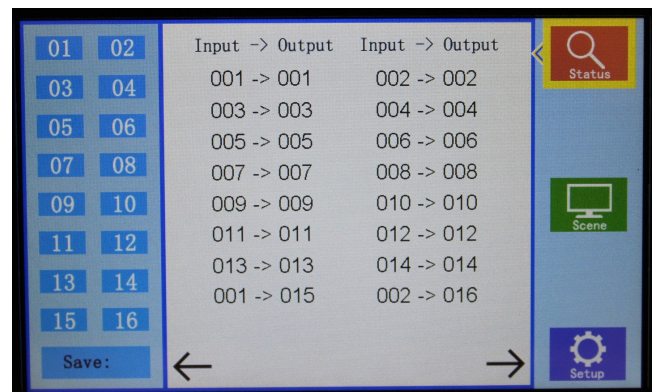
Default gateway: Set the default gateway

MAC address: Set a custom MAC address



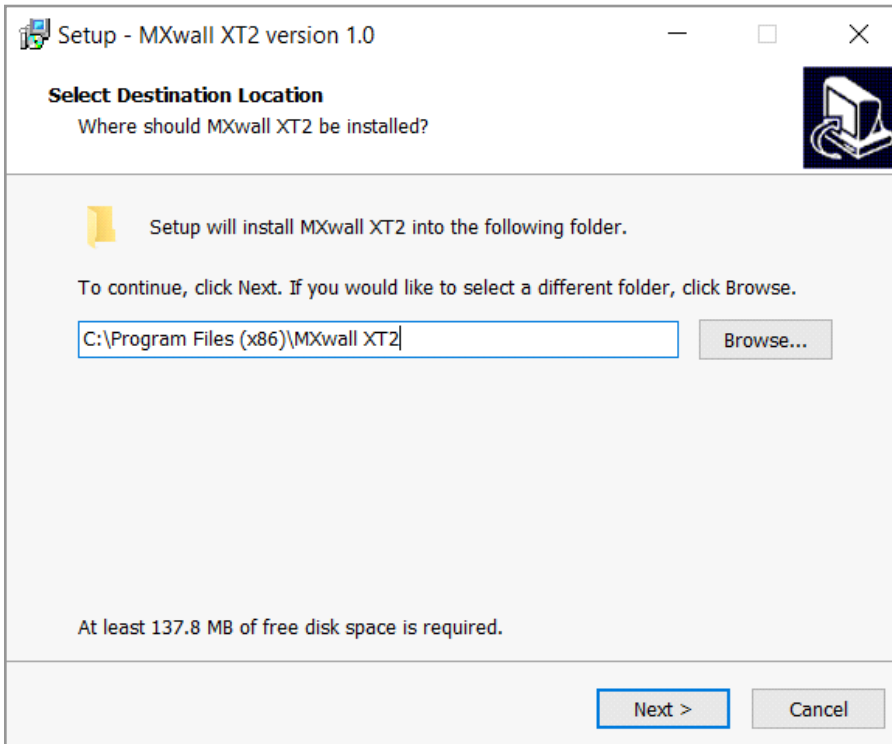
The Scene page on the front panel allows for easy playing of preconfigured layouts. Simply press the number corresponding to the desired layout, then press 'Recall' to play the desired layout.

The Status page on the front panel shows the current input to output mappings.

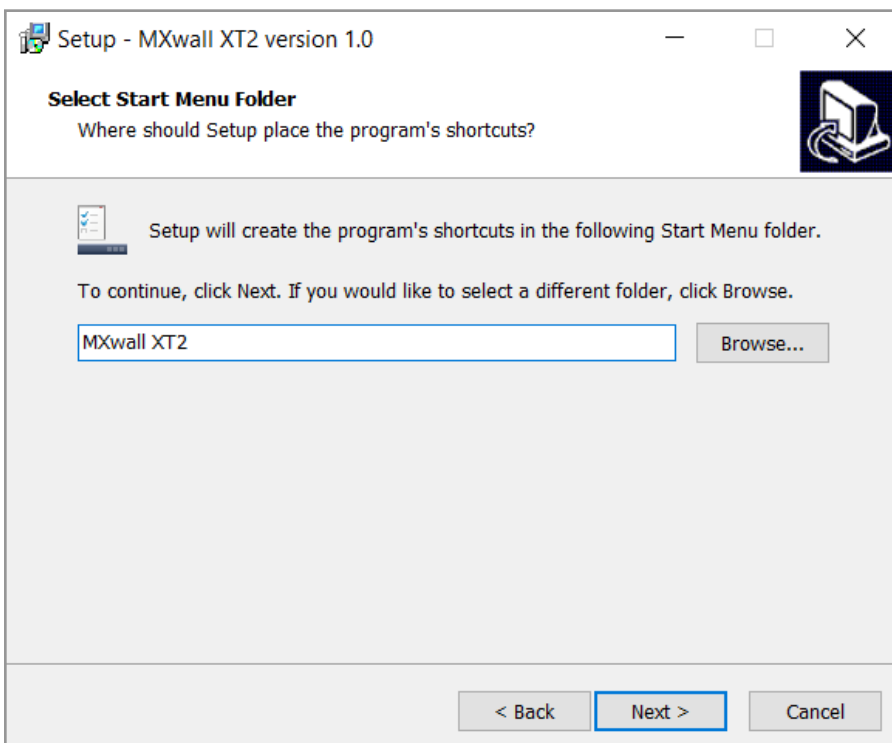


# SOFTWARE INSTALLATION

1. Run `qt_wall_installer.exe`
2. A **Setup** window will pop open. Select where you would like to save the QTWall software. It is recommended that the default installation path be used. Click '**Next >**'.



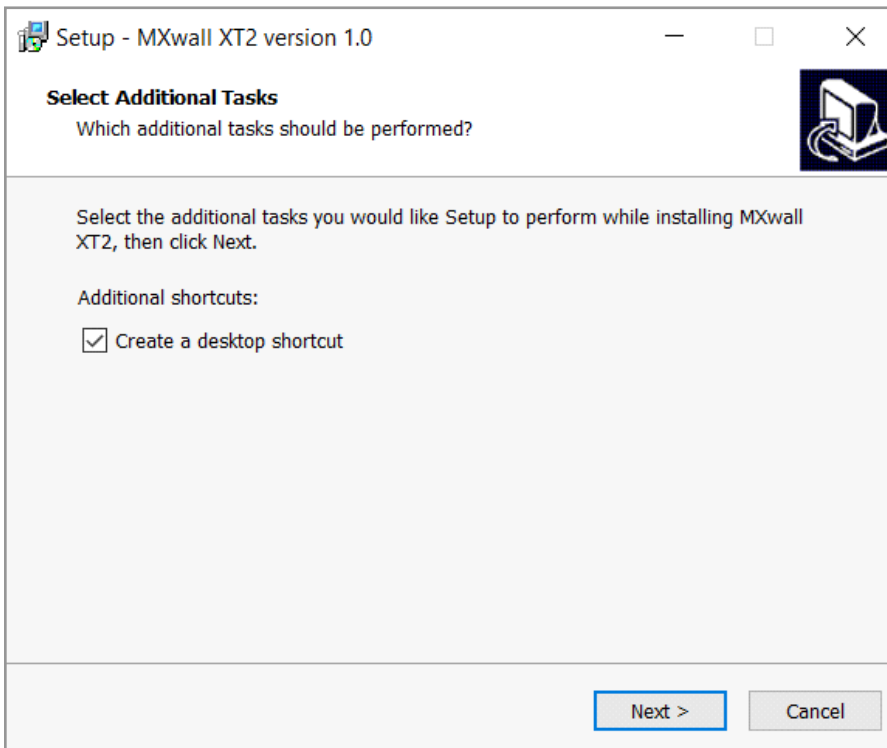
3. You will be asked to confirm the name of the **Start Menu** folder. Use the default name or choose a different name and then Click '**Next>**' to continue.



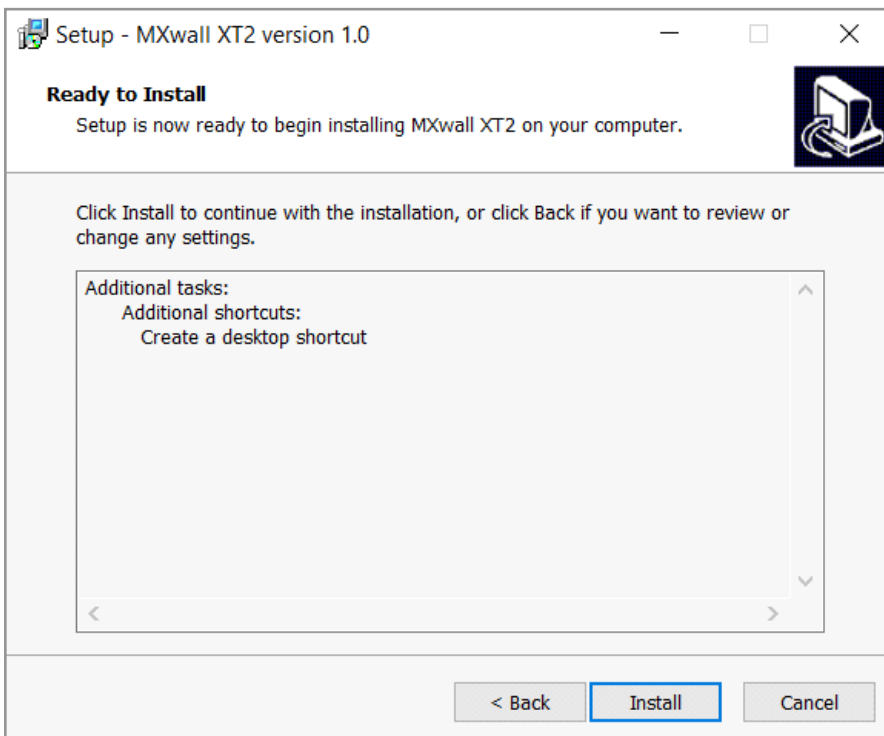


# SOFTWARE INSTALLATION (CONTINUED)

4. You will be given the option to create a desktop shortcut. Then click 'Next >'

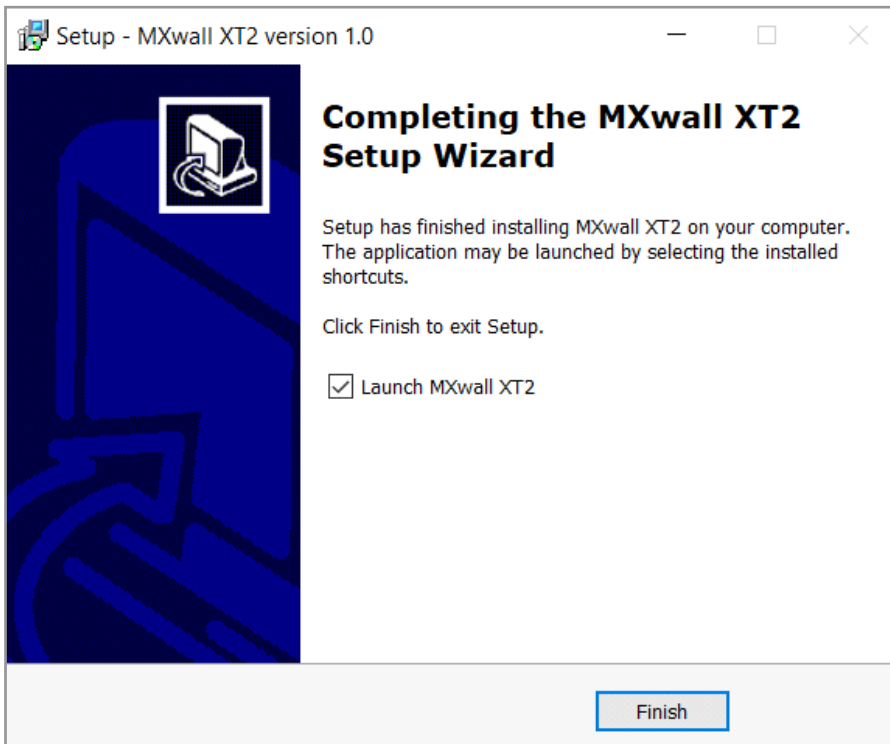


5. You will be given a prompt to confirm installation of the QTWall software. Click 'Install' to continue with the installation.



# SOFTWARE INSTALLATION

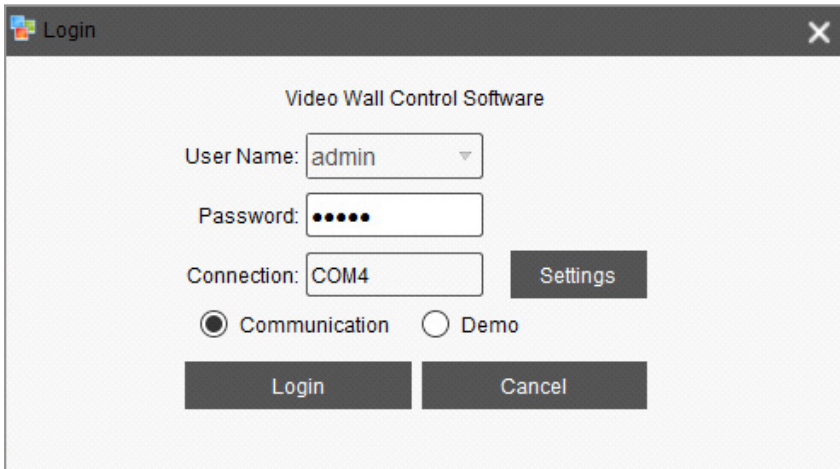
- When the installation is complete a window will appear stating whether the installation was successful or not. Click the **'Finish'** button to exit or launch the QTWall software.



# USING THE SOFTWARE

## Logging In

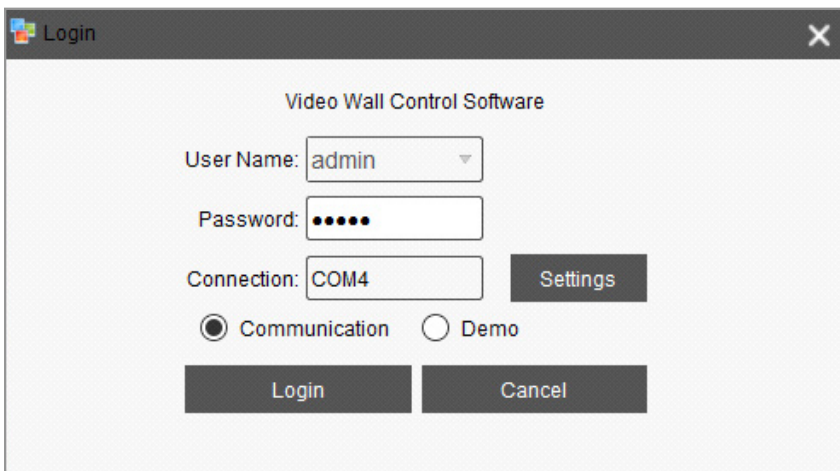
1. Run the **MXwall XT2 Software Manager**.
2. Log in using the default **Account Settings**.  
Username: 'admin', password: 'admin', then click the 'Login' button.



The screenshot shows a 'Login' dialog box for 'Video Wall Control Software'. It features a title bar with a close button. The main area contains the following elements: a 'User Name' dropdown menu with 'admin' selected; a 'Password' text box with five dots; a 'Connection' text box with 'COM4' selected; a 'Settings' button to the right of the connection box; two radio buttons for 'Communication' (selected) and 'Demo'; and two buttons at the bottom, 'Login' and 'Cancel'.

## Configuring Connection Settings

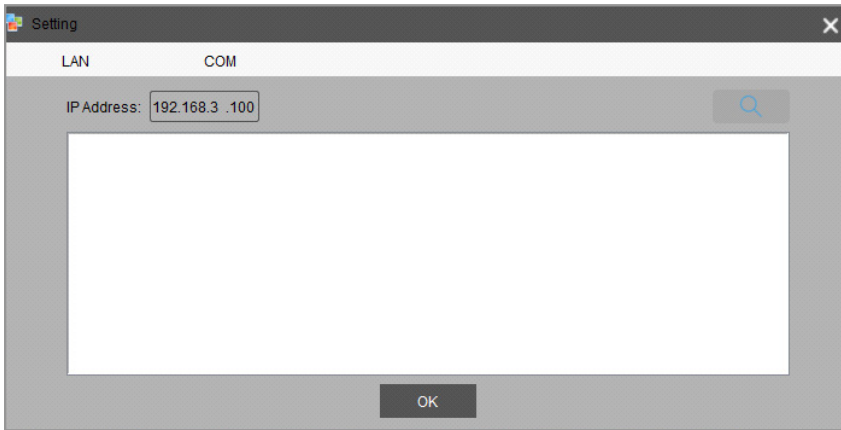
1. The connection settings can be configured at the login prompt or from the software manager.
2. To configure connection settings from the login prompt:
  1. Click 'Settings'



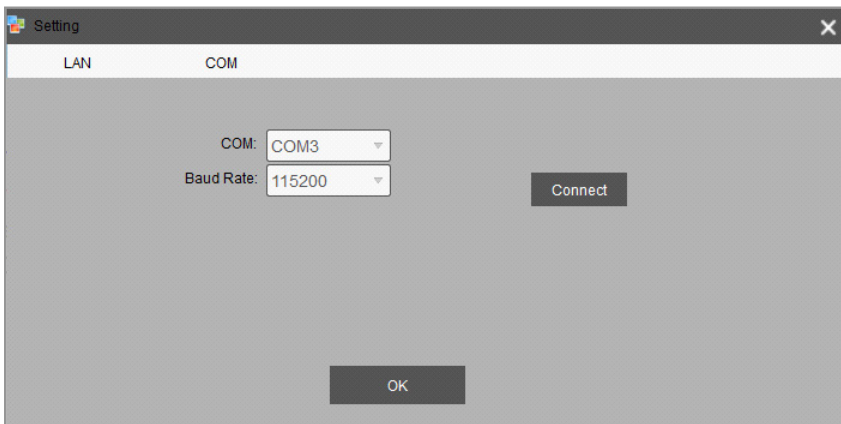
This screenshot is identical to the one above, showing the 'Login' dialog box. The 'Settings' button, located to the right of the 'Connection' text box, is highlighted with a dark grey background, indicating it is the focus of the instruction.

# USING THE SOFTWARE (CONTINUED)

2. To connect to the MXwall XT2 unit over LAN, either manually enter the unit's IP address in the **IP Address** bar, or select the magnifying glass search icon which will automatically detect the IP address. Then select '**OK**'.

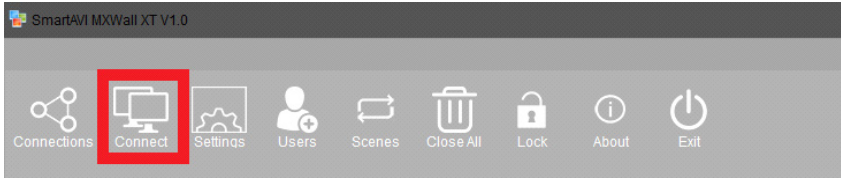


3. To connect to the unit over RS232, select '**COM**'. Enter the correct COM port and Baud Rate, and then press '**Connect**' and then '**OK**'.

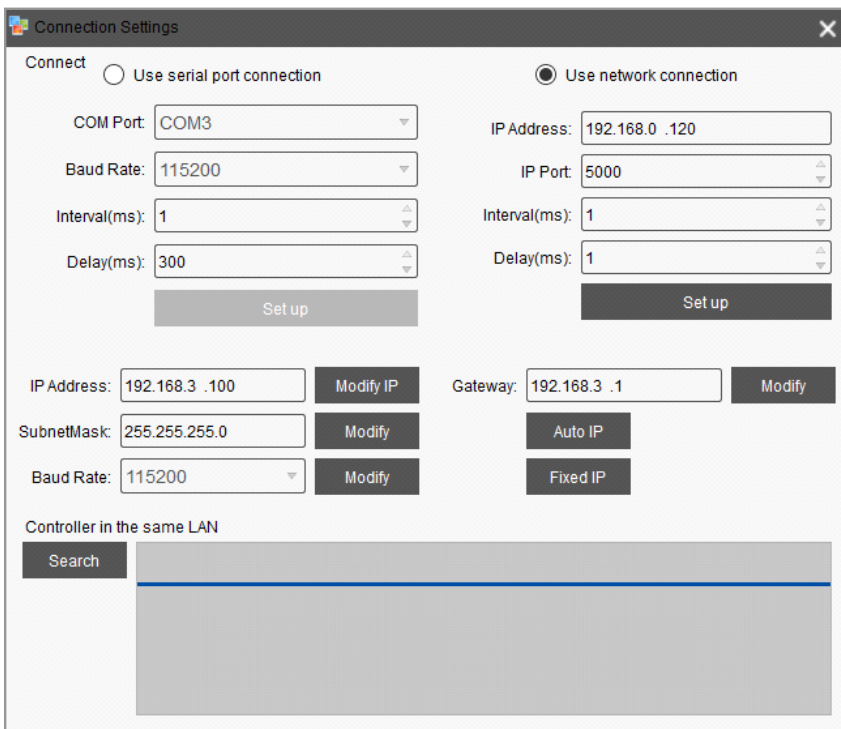


# USING THE SOFTWARE (CONTINUED)

3. To configure the connection settings from the software manager:
  1. Click the 'Connect' icon in the top navigation bar.



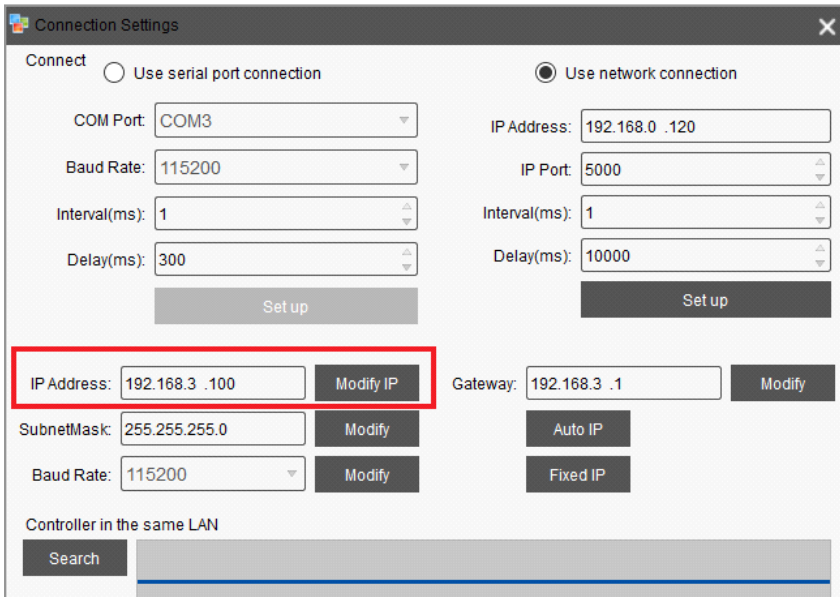
2. Here, choose whether to connect by network or serial port connection, enter the relevant information, then click 'Set up'.
3. Restart the software manager.



# USING THE SOFTWARE (CONTINUED)

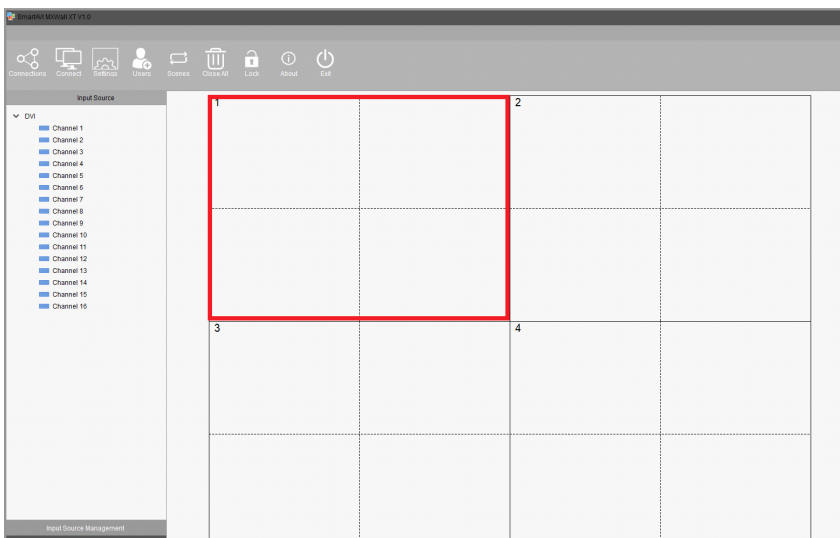
## Setting IP Address Statically

The IP address of the MXwall XT2 unit can be set statically from the connection settings window as shown in figure below. Simply enter the desired IP address and then press 'Modify IP'.



## Creating Inputs and Views

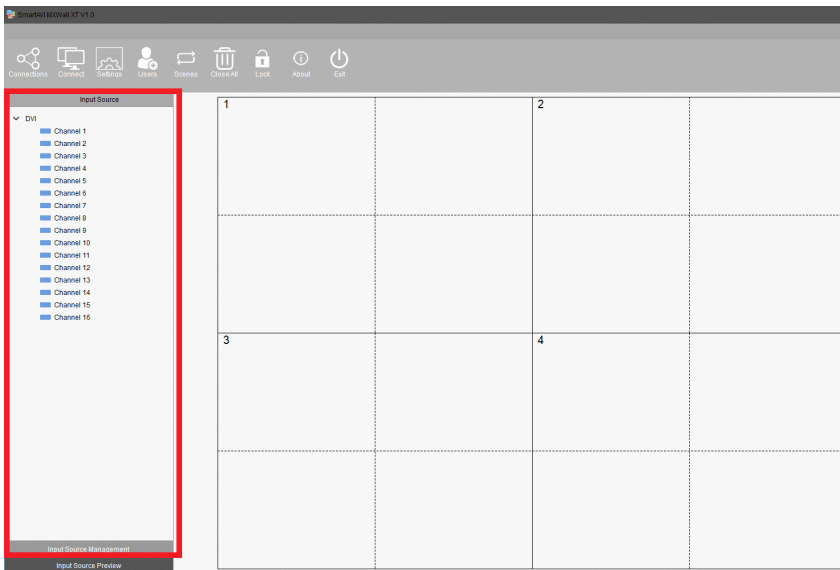
The MXWall software manager represents output screens as a grid. In figure below the highlighted square represents screen 1 on a grid of 4 screen. The input source channels are listed on the left-hand side of the manager. To map an input source to an output screen, simply drag and drop the channel icon into the square representing the desired output screen. Alternatively, click on the desired channel, and then click and trace a window within the desired output section(s) on the grid; double-click the window to fill the output section(s).



# USING THE SOFTWARE (CONTINUED)

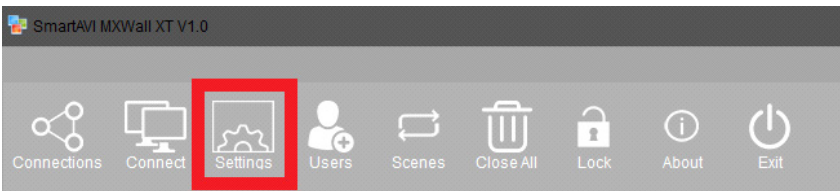
## Input Source Pane

The various input channels can be managed from the Input Source Management Pane. Each channel number corresponds to the input port number on the back of the MXwall unit.

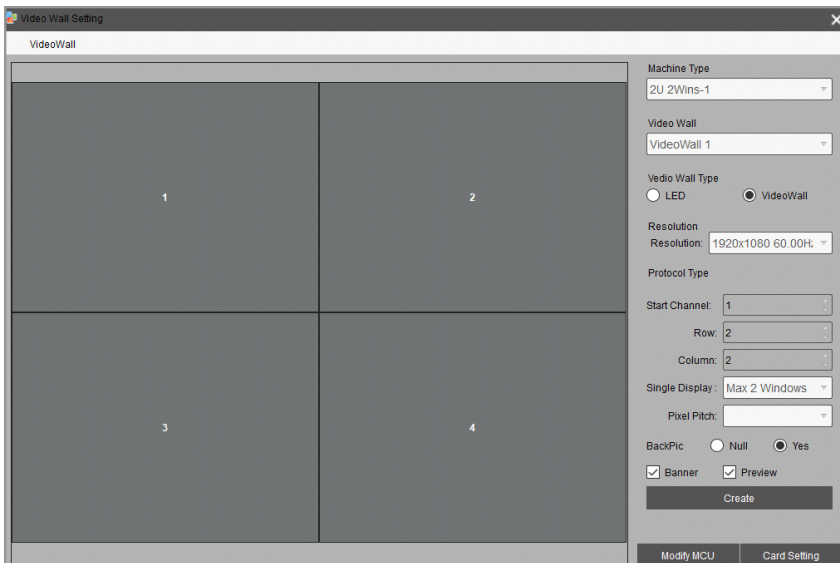


## Changing Settings

1. To change video wall settings, click the settings icon in the navigation bar.



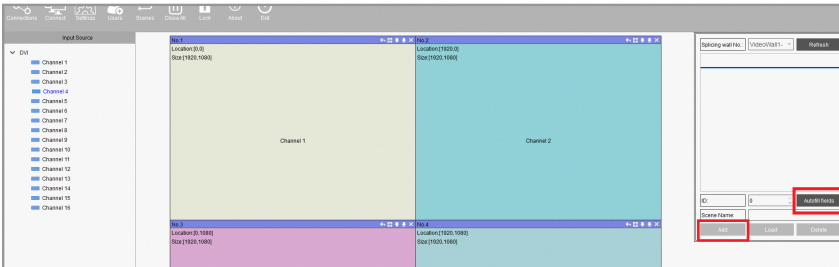
2. From the settings window, it is possible to change the resolution and refresh rate pairs, alter the start channel, and customize the number of rows and columns in the output section grid. After altering settings, click 'Create' and then 'Modify MCU' to save and apply the new settings.



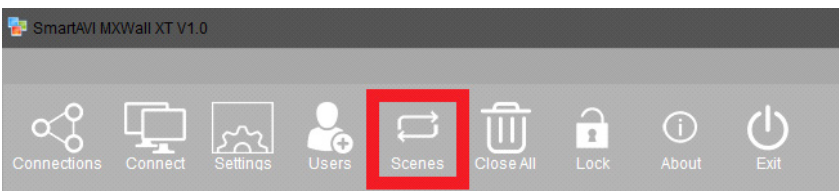
# USING THE SOFTWARE (CONTINUED)

## Creating Layouts and Scenes

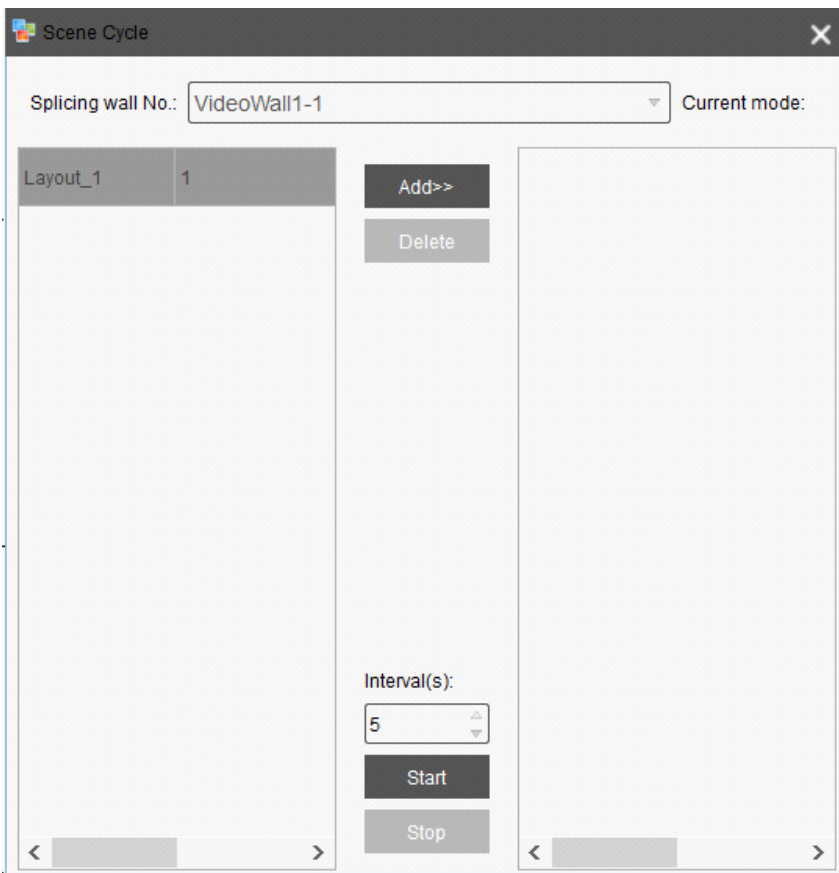
1. The MXwall XT2 allows users to create customizable layouts and then play them as scenes.
2. After creating the desired layout, select '**Autofill fields**' and then '**Add**'. This will create a layout.



3. Then, in the navigation bar, select '**Scenes**'



4. From the Scenes tab, select the appropriate layout(s), choose the time interval in seconds over which the layout(s) will play, and then click '**Add**'. Do this for up to 20 layouts in the order in which they will play.
5. Then, click '**Start**' to begin scene playback.

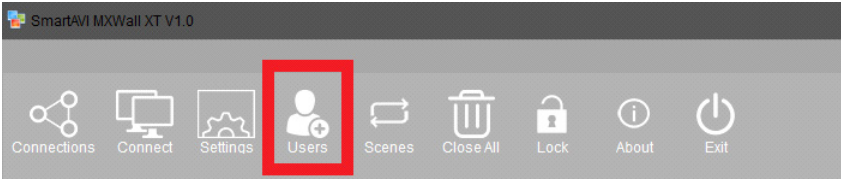




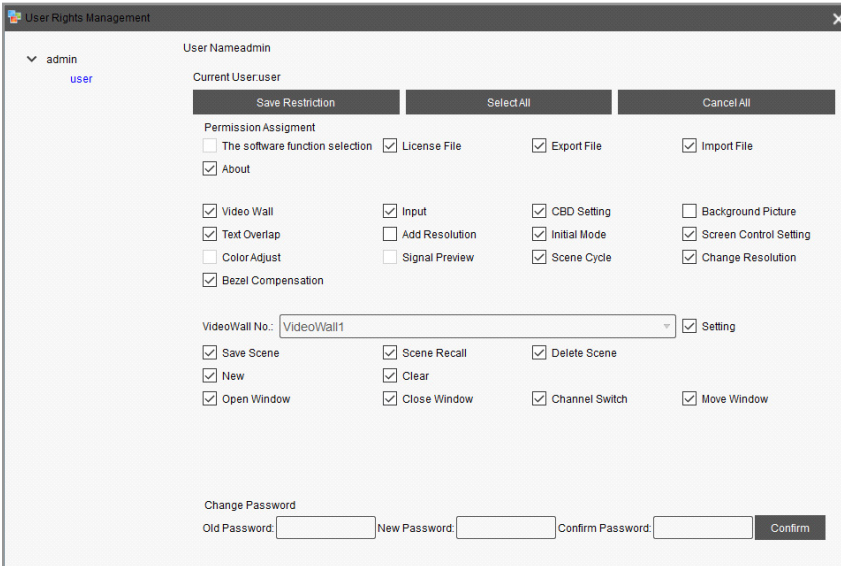
# USING THE SOFTWARE (CONTINUED)

## Users Permissions

To change user permissions, select the 'Users' icon in the navigation bar.



From this window, user permissions and passwords can be easily changed



# TROUBLESHOOTING

## No Power

- Make sure that the power adapter is securely connected to the power connector of the unit.
- Check the output voltage of the power supply and make sure that the voltage value is around 12VDC.
- Replace the power supply.

## No Video

- Check if all the video cables are connected properly.
- Connect the computer directly to the monitor to verify that your monitor and computer are functioning properly.
- Restart the computers.

## Keyboard is not working

- Check if the keyboard is properly connected to the unit.
- Check if the USB cables connecting the unit and the computers are properly connected.
- Try connecting the USB on the computer to a different port.
- Make sure that the keyboard works when directly connected to the computer.
- Replace the keyboard.

## Mouse is not working

- Check if the mouse is properly connected to the unit.
- Try connecting the USB on the computer to a different port.
- Make sure that the mouse works when directly connected to the computer.
- Replace the mouse.

## No Audio

- Check if all the audio cables are connected properly.
- Connect the speakers directly to the computer to verify that the speakers and the computer audio are functioning properly.
- Check the audio settings of the computer and verify that the audio output is through the speakers.

# TECHNICAL SUPPORT

For product inquiries, warranty questions, or technical questions, please contact [info@smartavi.com](mailto:info@smartavi.com).

# LIMITED WARRANTY STATEMENT

## A. Extent of limited warranty

SmartAVI, Inc. warrants to the end-user customers that the SmartAVI product specified above will be free from defects in materials and workmanship for the duration of 1 year, which duration begins on the date of purchase by the customer. Customer is responsible for maintaining proof of date of purchase.

SmartAVI limited warranty covers only those defects which arise as a result of normal use of the product, and do not apply to any:

- a. Improper or inadequate maintenance or modifications
- b. Operations outside product specifications
- c. Mechanical abuse and exposure to severe conditions

If SmartAVI receives, during applicable warranty period, a notice of defect, SmartAVI will at its discretion replace or repair defective product. If SmartAVI is unable to replace or repair defective product covered by the SmartAVI warranty within reasonable period of time, SmartAVI shall refund the cost of the product.

SmartAVI shall have no obligation to repair, replace or refund unit until customer returns defective product to SmartAVI.

Any replacement product could be new or like new, provided that it has functionality at least equal to that of the product being replaced.

SmartAVI limited warranty is valid in any country where the covered product is distributed by SmartAVI.

## B. Limitations of warranty

To the extent allowed by local law, neither SmartAVI nor its third party suppliers make any other warranty or condition of any kind whether expressed or implied with respect to the SmartAVI product, and specifically disclaim implied warranties or conditions of merchantability, satisfactory quality, and fitness for a particular purpose.

## C. Limitations of liability

To the extent allowed by local law the remedies provided in this warranty statement are the customers sole and exclusive remedies.

To the extent allowed by local law, except for the obligations specifically set forth in this warranty statement, in no event will SmartAVI or its third party suppliers be liable for direct, indirect, special, incidental, or consequential damages whether based on contract, tort or any other legal theory and whether advised of the possibility of such damages.

## D. Local law

To the extent that this warranty statement is inconsistent with local law, this warranty statement shall be considered modified to be consistent with such law.

# Smart-AVI

SMART AUDIO VIDEO INNOVATION

## NOTICE

The information contained in this document is subject to change without notice. SmartAVI makes no warranty of any kind with regard to this material, including but not limited to, implied warranties of merchantability and fitness for particular purpose. SmartAVI will not be liable for errors contained herein or for incidental or consequential damages in connection with the furnishing, performance or use of this material. No part of this document may be photocopied, reproduced, or translated into another language without prior written consent from SmartAVI, Inc.

20180109



**Designed and Manufactured in the USA**

Tel: (800) AVI-2131 • (702) 800-0005  
2455 W Cheyenne Ave, Suite 112  
North Las Vegas, NV 89032

[www.smartavi.com](http://www.smartavi.com)