

TECHNICAL SPECIFICATION

VIDEO	
Format	HDMI 1.4, 1.0
Input Interface	(16) HDMI (female)
Output Interface	(4) HDMI (female)
Resolution	Up to 4K (3840x2160 @30Hz)
DDC	5 volts p-p (TTL)
Input Equalization	Automatic
Input Cable Length	Up to 20 ft.
Output Cable Length	Up to 20 ft.
AUDIO	
Input Interface	(4) 3.5 mm Stereo Audio
Output Interface	(1) 3.5 mm Stereo Audio
Impedance	600 Ohm
Frequency Response	20 Hz to 20 kHz
Nominal Level	0-1.0 V
Common Mode	Rejection at 60 dB
USB	
Signal Type	USB 2.0, 1.1, and 1.0 w/ internal hub
Input Interface	(4) USB Type B
Output Interface	(2) USB 1.1 Type A for K/M (2) USB 2.0 Type A Transparent
CONTROL	
Front Panel	Buttons, Select/Switch between sources and view the current selected channel
RS-232	DB9 Female - 115200, N, 8, 1, No flow control
Hot Keys	Via Keyboard
OTHER	
Power	100-240 VAC/ 5VDC4A
Dimensions	12.75" W x 4.6" H x 5.8" D
Weight	5.4 lbs
Approvals	UL, CE, ROHS Compliant
Operating Temp.	32-131 °F (0-55 °C)
Storage Temp.	-4-185 °F (-20-85 °C)
Humidity	Up to 95%
Emulation	Keyboard and Mouse

WHAT'S IN THE BOX

PART NO.	Q-TY	DESCRIPTION
HDN-4QUAD-S	1	4-Port Quad-Head HDMI KVM Switch with USB 2.0 and Audio Sharing
PS5VD4A	1	PS5VD4A Power Supply
Quick Start Guide	1	

NOTICE

The information contained in this document is subject to change without notice. SmartAVI makes no warranty of any kind with regard to this material, including but not limited to, implied warranties of merchantability and fitness for particular purpose. SmartAVI will not be liable for errors contained herein or for incidental or consequential damages in connection with the furnishing, performance or use of this material.

No part of this document may be photocopied, reproduced, or translated into another language without prior written consent from SmartAVI Technologies, Inc.



800.AVI.2131, 702.800.0005
2455 W Cheyenne Ave, Suite 112
North Las Vegas, NV 89032

SmartAVI.com

Smart-AVI
SMART AUDIO VIDEO INNOVATION

HDN-4QUAD

4-Port Quad HDMI KVM Switch with USB 2.0 and Audio Sharing



**ACCESS AND CONTROL
UP TO 4 COMPUTERS
FROM A SINGLE WORKSTATION**

Quick Start Guide

SYSTEM CONTROL

There are three ways to control the HDN-4QUAD: Keyboard HotKeys, RS-232 Serial Commands, and Front Panel Buttons.

The settings for the serial connection are as follows:
Baud rate: **115200**; Data Bits: **8**; Parity: **None**; Stop Bits: **1**;
Flow Control: **None**.

The following commands can be used:

Command	HotKey	RS-232
All USB, audio, video	[CTRL] [CTRL] [port#] [ENTER]	//m[port#] [ENTER]
Audio Only	[CTRL] [CTRL] a[port#] [ENTER]	//a[port#] [ENTER]
KM Only	[CTRL] [CTRL] c[port#] [ENTER]	//c[port#] [ENTER]
USB Only	[CTRL] [CTRL] u[port#] [ENTER]	//u[port#] [ENTER]
Learn EDID	[CTRL] [CTRL] e [ENTER]	//e [ENTER]
Trigger Hotplug	[CTRL] [CTRL] h [ENTER]	//h [ENTER]
Reset Software	[CTRL] [CTRL] r	//r [ENTER]
Factory Defaults	[CTRL] [CTRL] f	//f [ENTER]
Same as front panel ◀ M1 button	[HK] [HK] ↑	N/A
Same as front panel M2 ▶ button	[HK] [HK] ↓	N/A
Get Port Status	N/A	//?? [ENTER]

CUSTOM HOTKEY TRIGGERS

Users are able to customize the keys that trigger Hotkeys. The following keys are allowed:

CTRL (Left/ Right), ALT, SHIFT (Left/ Right), Caps Lock, Scroll Lock, F1-F12

Change HK Trigger

HK + HK + X + desired hotkey

View Current HK Trigger

Use the RS-232 command: //?? [ENTER]

Reset HK Trigger

Run "Factory Defaults" command.

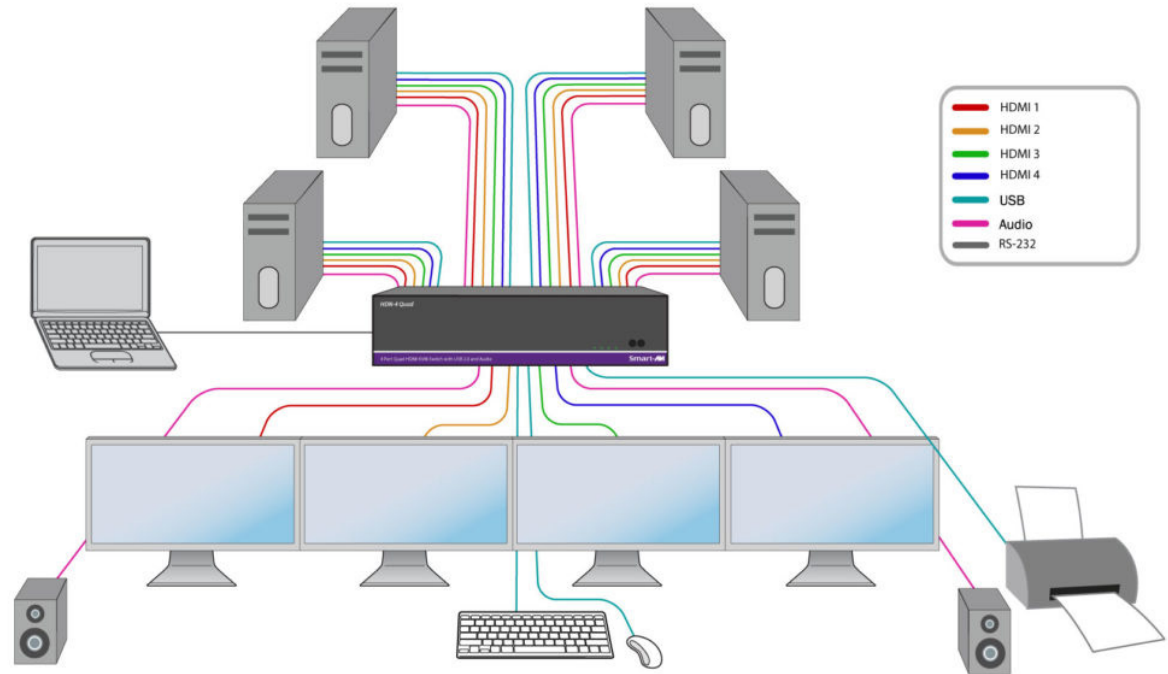
Default HotKey Trigger

CTRL (Left)

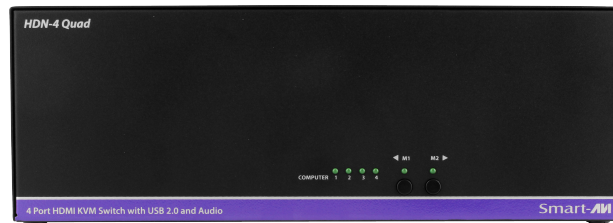
HARDWARE INSTALLATION

1. Ensure that power is disconnected from the HDN-4 Quad.
2. Connect the HDMI cables, and USB cables (male-A to male-B) from the computers to the respective ports on the HDN-4 Quad.
3. Optionally connect Audio cables from the computers to the respective ports on the HDN-4 Quad.
4. Optionally connect RS-232 for control functions.
5. Connect a USB keyboard and USB mouse to the two USB ports marked for keyboard & mouse on the HDN-4 Quad.
6. Optionally connect up to 2 USB 2.0 devices to the HDN-4 Quad.
7. Optionally Connect speakers to the Audio Out port on the HDN-4 Quad.
8. Connect the displays to the HDMI Output ports on the HDN-4 Quad.
9. Power on the HDN-4 Quad.

Note: The two USB ports on the right are dedicated for keyboard and mouse emulation only. The two on the left are for other USB peripherals (flash drives, printers, etc.)



HDN-4QUAD FRONT



HDN-4QUAD BACK

