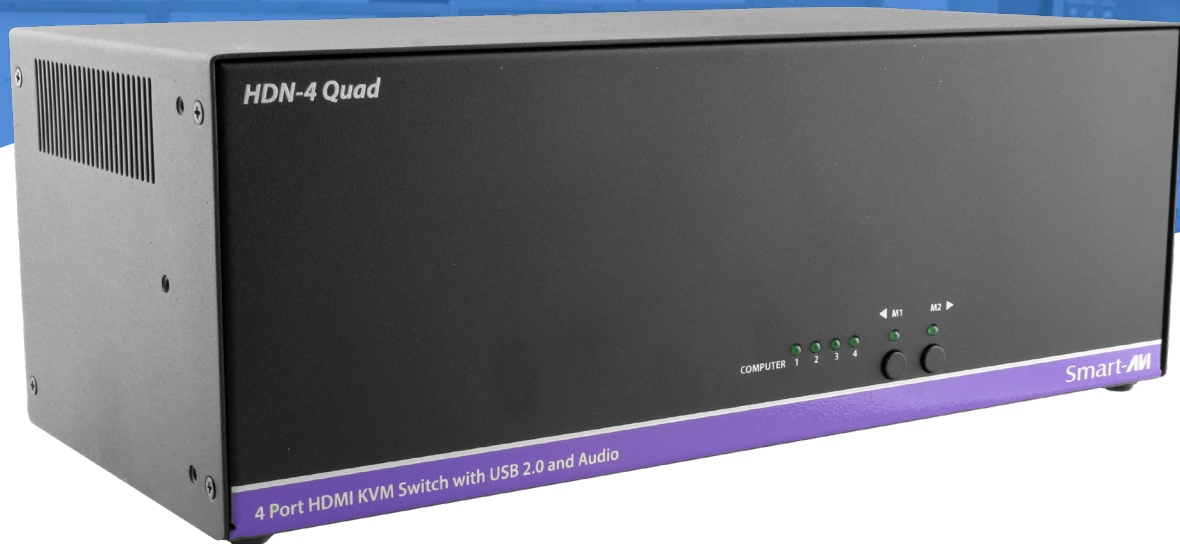


HDN-4QUAD

4-PORT QUAD-HEAD HDMI KVM SWITCH WITH USB 2.0 AND AUDIO SHARING



USER MANUAL



Designed and Manufactured in the USA

Smart-AVI

1-800-284-2131
www.smartavi.com

OVERVIEW

TECHNICAL SPECIFICATIONS	3
WHAT'S IN THE BOX?	4
FRONT AND BACK	4
INSTALLATION	5
CONTROL	6
DISABLE UNUSED PORTS	6
CUSTOM HOTKEY TRIGGERS	7
ESTABLISHING AN RS-232 CONNECTION	7-8
TROUBLESHOOTING	9
TECHNICAL SUPPORT	9
LIMITED WARRANTY STATEMENT	10

TECHNICAL SPECIFICATIONS

VIDEO	
Format	HDMI 1.4, 1.0
Input Interface	(16) HDMI (female)
Output Interface	(4) HDMI (female)
Resolution	Up to 4K (3840x2160 @30Hz)
DDC	5 volts p-p (TTL)
Input Equalization	Automatic
Input Cable Length	Up to 20 ft
Output Cable Length	Up to 20 ft
AUDIO	
Input Interface	(4) 3.5 mm Stereo Audio
Output Interface	(1) 3.5 mm Stereo Audio
Impedance	600 Ohm
Frequency Response	20 Hz to 20 kHz
Nominal Level	0-1.0 V
Common Mode	Rejection at 60 dB
USB	
Signal Type	USB 2.0, 1.1, and 1.0 w/ internal hub
Input Interface	(4) USB Type B (female)
Output Interface	(2) USB Type A (female) for K/M emulation; (2) for USB 2.0 Transparent
CONTROL	
Front Panel	Buttons, Select/Switch between sources and view the current selected channel
RS-232	DB9 Female - 115200 N,8,1, No flow control
Hot Keys	Via Keyboard
OTHER	
Power Adapter	External 100-240 VAC/ 5VDC4A
Dimensions	4.6" H x 5.8" D x 12.75" W
Weight	5.4 lbs
Operating Temperature	32-131°F (0-55 °C)
Storage Temperature	-4-185 °F (-20-85 °C)
Humidity	Up to 95% (No Condensation)
Emulation	Keyboard and Mouse

WHAT'S IN THE BOX?

PART NO.	Q-TY	DESCRIPTION
HDN-4QUAD-S	1	4-Port Quad-Head HDMI KVM Switch with USB 2.0 and Audio Sharing
PS5VDC4A	1	Power Adapter
	1	User Manual

HDN-4QUAD FRONT



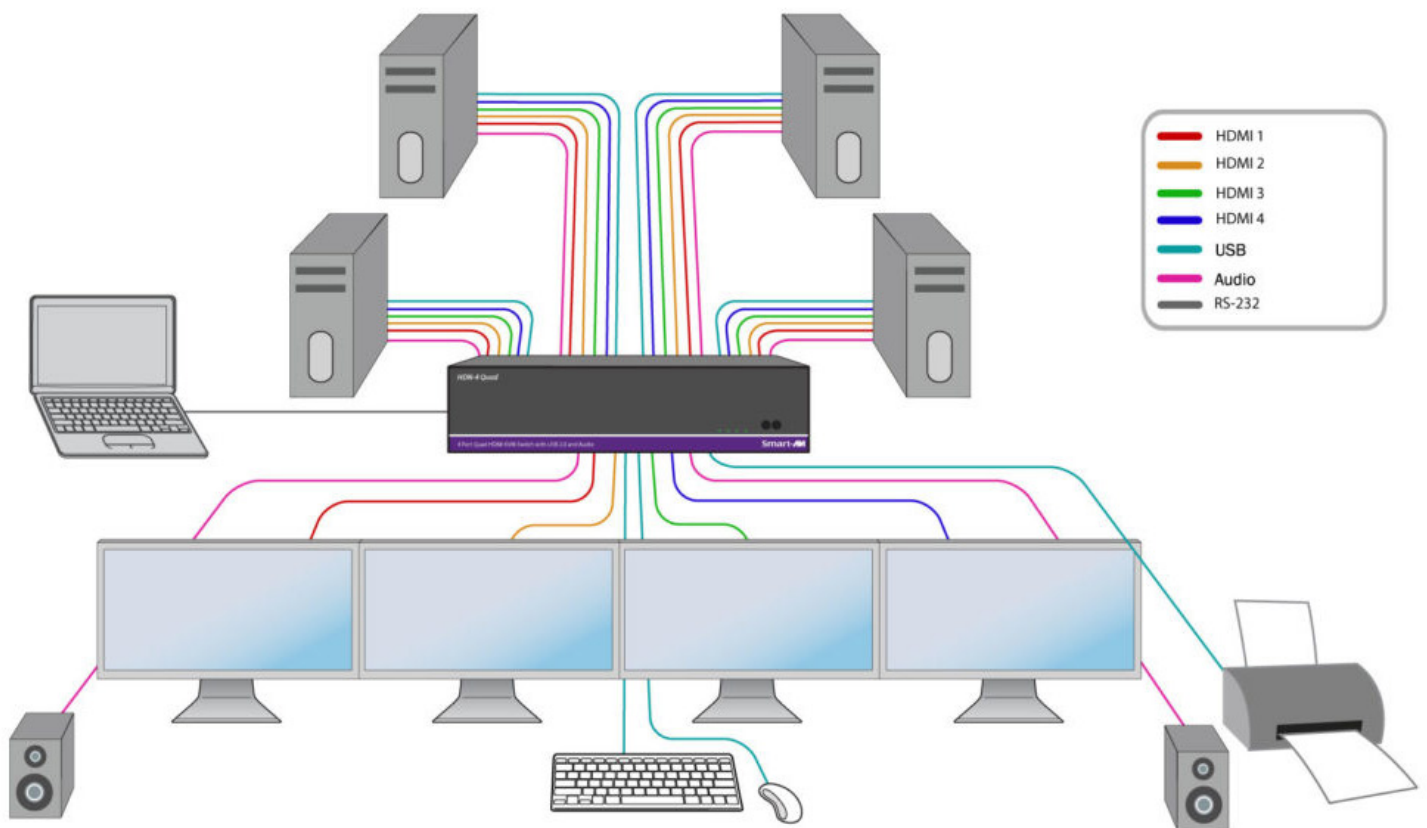
HDN-4QUAD BACK



INSTALLATION

1. Ensure that power is disconnected from the HDN-4QUAD.
2. Connect the HDMI cables, and USB cables (male-A to male-B) from the computers to the respective ports on the HDN-4QUAD.
3. Optionally connect Audio cables from the computers to the respective ports on the HDN-4QUAD.
4. Optionally connect RS-232 for control functions.
5. Connect a USB keyboard and USB mouse to the two USB ports marked for keyboard & mouse on the HDN-4QUAD.
6. Optionally connect up to 2 USB 2.0 devices to the HDN-4QUAD.
7. Optionally Connect speakers to the Audio Out port on the HDN-4QUAD.
8. Connect the display to the HDMI Output port on the HDN-4QUAD.
9. Power on the HDN-4QUAD.

Note: The 2 USB ports on the right are dedicated for keyboard and mouse with full emulation. The 2 on the left are for other USB peripherals (flash drives, printers, etc.)



CONTROL

FRONT PANEL CONTROL

To switch ports using the front panel, press the M1 or M2 button to navigate from computer to computer. The numbered LED lights will indicate which computer is selected.



HOTKEY COMMANDS

A Hotkey command is a keyboard sequence used to trigger an action on the HDN-4QUAD through the use of the keyboard connected on the USB port of the HDN-4QUAD. To activate the hotkey sequence, press the CTRL key twice and then enter the desired hotkey commands. Hotkey commands are listed below.

RS-232 CONTROL

RS-232 control allows for remote control of the HDN-4QUAD. See the section on establishing an RS-232 connection in this manual. Set the connection to 115200 N,8,1, No flow control. RS-232 commands are listed below.

COMMANDS	HOTKEYS	RS-232 CONTROL
Switch all USB devices, audio and video	[CTRL] [CTRL] [port #] [ENTER] *Please note there is no "m" for this command	//m [port #] [ENTER]
Switch Audio Only	[CTRL] [CTRL] a [port #] [ENTER]	//a [port #] [ENTER]
Switch KVM Only	[CTRL] [CTRL] c [port #] [ENTER]	//c [port #] [ENTER]
Switch USB 2.0 Only	[CTRL] [CTRL] u [port #] [ENTER]	//u [port #] [ENTER]
Learn EDID	[CTRL] [CTRL] e [ENTER]	//e [ENTER]
Trigger Hotplug	[CTRL] [CTRL] h [ENTER]	//h [ENTER]
Reset Software	[CTRL] [CTRL] r	//r [ENTER]
Factory Defaults	[CTRL] [CTRL] f	//f [ENTER]
Same as front panel ◀ M1 button	[CTRL] [CTRL] ↑	N/A
Same as front panel M2 ▶ button	[CTRL] [CTRL] ↓	N/A
Get Port Status	N/A	//?? [ENTER]

DISABLE UNUSED PORTS

The following commands can be used to disable ports 4 and 3 to better suit 2 and 3 port configurations.

COMMANDS	HOTKEYS	RS-232 CONTROL
Disable Port 4	[CTRL] [CTRL] d 4 [ENTER]	//d 4 [ENTER]
Disable Port 3 and 4	[CTRL] [CTRL] d 3 [ENTER]	//d 3 [ENTER]

NOTE: Factory reset to enable port 3 - 4

CUSTOM HOTKEY TRIGGERS

Users are able to customize the keys that trigger Hotkeys. The default trigger for hot key function on the keyboard is Ctrl +Ctrl. The trigger function can be used to change to the following keys:

CTRL (Left / Right), ALT, SHIFT(Left / Right), Caps Lock, Scroll Lock, F1-F12

To view hotkey trigger setting

Use the RS-232 command: //??<CR> to view the current HotKey Trigger To reset the Hotkey Trigger use the “Factory Defaults” command.

To change the hotkey trigger setting

HK + HK + X + desired hotkey

Example: If users current Hotkey trigger is Shift and want to change to Scroll Lock, user would type Shift + Shift + X + Scroll lock

ESTABLISHING AN RS-232 CONNECTION

Before you start

Controlling a Smart-AVI device via RS-232 requires an RS-232 card installed on your computer or a USB to RS-232 adapter. Below are instructions on how to create an RS-232 connection between a PC and the Smart-AVI device.

Use terminal client software such as the PuTTY to connect to the Smart-AVI device. Make sure to use communication settings 115200 bps, N, 8, 1, No flow control.

Check the device and your PC to determine if you need a male to male or a male to female cable and how long it needs to be. The Smart-AVI device requires a straight through cable. You can use a Null Modem Adapter to convert a crossed cable to a straight through cable. Examples of crossed and straight through cable pin-outs are shown below. The standard maximum length for a RS-232 cable is 50 feet. Call our Smart-AVI Support Engineer if you require more information.

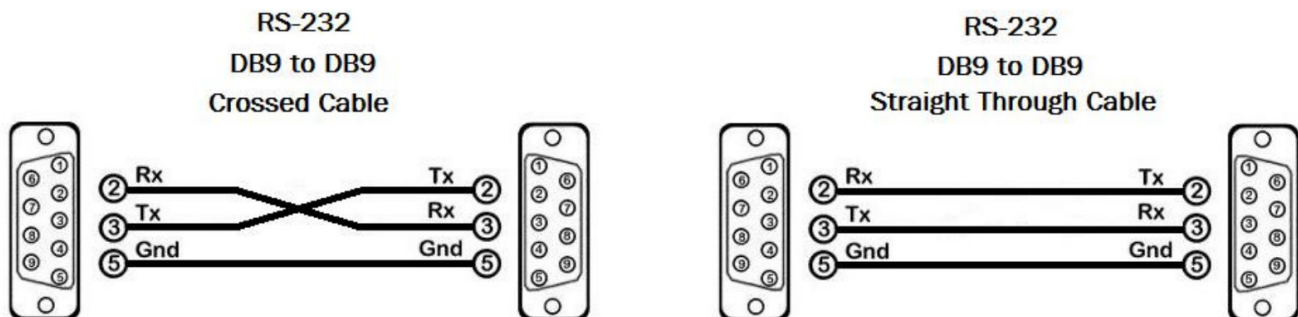


Figure 7-1
Examples of 9 pin RS-232 Straight Through and Crossed Cables

ESTABLISHING AN RS-232 CONNECTION (CONTINUE)

Establish a connection to the Smart-AVI device

1. Connect an RS-232 cable to the RS-232 connector on the PC.
2. Connect the other end of the cable to the RS-232 port of the Smart-AVI device.
3. Use Windows Control Panel / Device Manager to identify the Com port number. See instructions and Figure 7-2 below.
4. Power on the device.

If you are using a USB to COM port adapter on a Windows PC and need to identify the COM port used, do the following:

1. Click on the start button.
2. Click on Control Panel.
3. Click on Device Manager.
4. Click on the arrow next to Ports (COM & LPT).

You should see the name of your adapter and the COM port number in use.

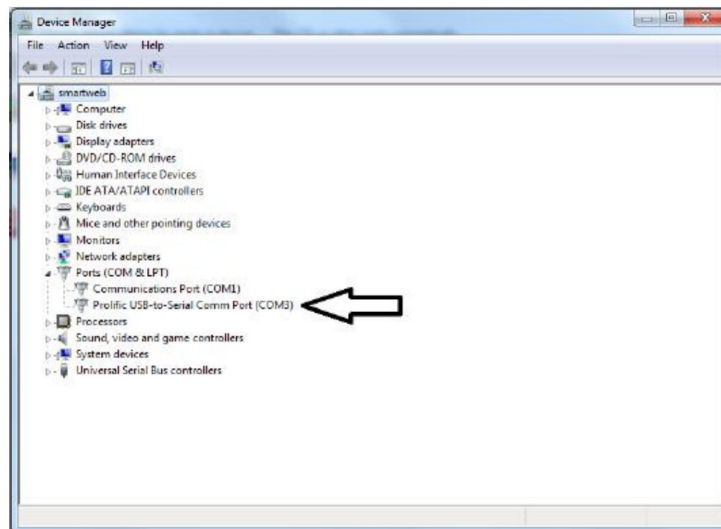


Figure 7-2

TROUBLESHOOTING

No Power

- Make sure that the power adapter is securely connected to the power connector of the unit.
- Check the output voltage of the power supply and make sure that the voltage value is around 12VDC.
- Replace the power supply.

No Video

- Check if all the video cables are connected properly.
- Connect the computer directly to the monitor to verify that your monitor and computer are functioning properly.
- Restart the computers.

Keyboard is not working

- Check if the keyboard is properly connected to the unit.
- Check if the USB cables connecting the unit and the computers are properly connected.
- Try connecting the USB on the computer to a different port.
- Make sure that the keyboard works when directly connected to the computer.
- Replace the keyboard.

Mouse is not working

- Check if the mouse is properly connected to the unit.
- Try connecting the USB on the computer to a different port.
- Make sure that the mouse works when directly connected to the computer.
- Replace the mouse.

No Audio

- Check if all the audio cables are connected properly.
- Connect the speakers directly to the computer to verify that the speakers and the computer audio are functioning properly.
- Check the audio settings of the computer and verify that the audio output is through the speakers.

TECHNICAL SUPPORT

For product inquiries, warranty questions, or technical questions, please contact info@smartavi.com.

LIMITED WARRANTY STATEMENT

A. Extent of limited warranty

SmartAVI, Inc. warrants to the end-user customers that the SmartAVI product specified above will be free from defects in materials and workmanship for the duration of 1 year, which duration begins on the date of purchase by the customer. Customer is responsible for maintaining proof of date of purchase.

SmartAVI limited warranty covers only those defects which arise as a result of normal use of the product, and do not apply to any:

- a. Improper or inadequate maintenance or modifications
- b. Operations outside product specifications
- c. Mechanical abuse and exposure to severe conditions

If SmartAVI receives, during applicable warranty period, a notice of defect, SmartAVI will at its discretion replace or repair defective product. If SmartAVI is unable to replace or repair defective product covered by the SmartAVI warranty within reasonable period of time, SmartAVI shall refund the cost of the product.

SmartAVI shall have no obligation to repair, replace or refund unit until customer returns defective product to SmartAVI.

Any replacement product could be new or like new, provided that it has functionality at least equal to that of the product being replaced.

SmartAVI limited warranty is valid in any country where the covered product is distributed by SmartAVI.

B. Limitations of warranty

To the extent allowed by local law, neither SmartAVI nor its third party suppliers make any other warranty or condition of any kind whether expressed or implied with respect to the SmartAVI product, and specifically disclaim implied warranties or conditions of merchantability, satisfactory quality, and fitness for a particular purpose.

C. Limitations of liability

To the extent allowed by local law the remedies provided in this warranty statement are the customers sole and exclusive remedies.

To the extent allowed by local law, except for the obligations specifically set forth in this warranty statement, in no event will SmartAVI or its third party suppliers be liable for direct, indirect, special, incidental, or consequential damages whether based on contract, tort or any other legal theory and whether advised of the possibility of such damages.

D. Local law

To the extent that this warranty statement is inconsistent with local law, this warranty statement shall be considered modified to be consistent with such law.

Smart-**AVI**

SMART AUDIO VIDEO INNOVATION

NOTICE

The information contained in this document is subject to change without notice. SmartAVI makes no warranty of any kind with regard to this material, including but not limited to, implied warranties of merchantability and fitness for particular purpose. SmartAVI will not be liable for errors contained herein or for incidental or consequential damages in connection with the furnishing, performance or use of this material. No part of this document may be photocopied, reproduced, or translated into another language without prior written consent from SmartAVI, Inc.

20180109



Designed and Manufactured in the USA

Tel: (800) AVI-2131 • (702) 800-0005
2455 W Cheyenne Ave, Suite 112
North Las Vegas, NV 89032

www.smartavi.com