

# MXWALL-UHD

32X32 ULTRA HD (4K/60HZ) VIDEOWALL PROCESSOR WITH SEAMLESS MATRIX FEATURES



ALL-IN-ONE VIDEO WALL AND MATRIX SOLUTION WITH 4K FULL UHD INPUTS AND OUTPUTS,  
AN INTEGRATED CONVERTER AND SCALER

## FEATURES

- Supports UHD 4K/60Hz, 4K/30Hz and 1080p/60Hz on both inputs and outputs
- HDMI 2.0 input
- Seamless switching
- Control via IP, RS232 and the front panel
- Windows GUI allows unlimited customization
- Can be configured as 2x4, 4x2, 1x8 and more
- Integrated scaler can convert any resolution to UHD
- Complete hardware solution
- Plug-and-play ready
- Unlimited Layouts

## APPLICATIONS

- Corporate or Educational Presentations
- Airport Installations
- Wall Displays
- Digital Signage
- Dealer Rooms
- Control Rooms
- Shopping Centers
- Security
- Point-of-Sale Retail
- Entertainment Venues
- Corporate Lobbies
- Restaurants



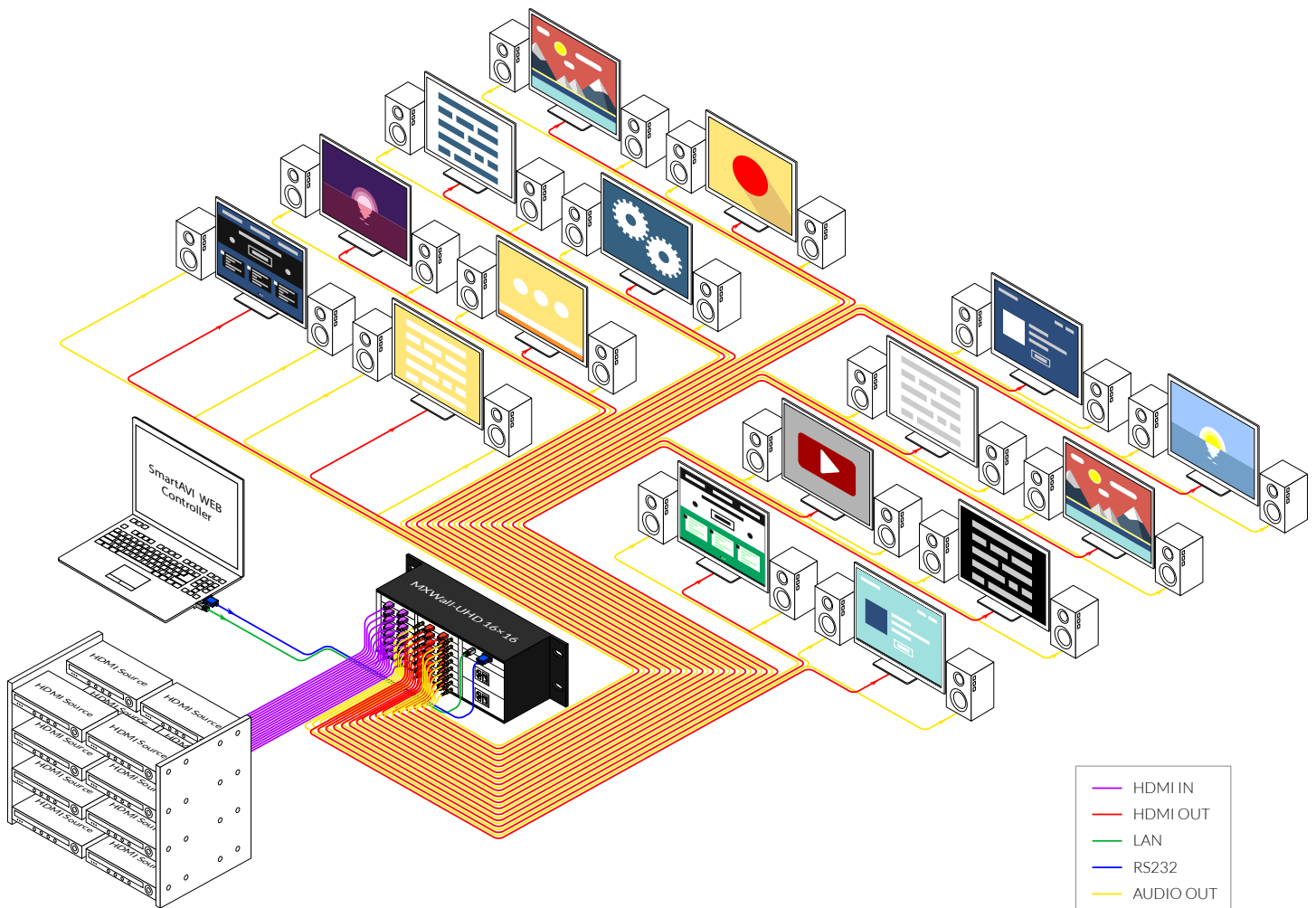
Designed and Manufactured in the USA

# OVERVIEW

The MXWALL-UHD is a video wall processor and matrix switch with up to 32 full UHD inputs and 32 outputs, an integrated converter and scaler. Compact, plug-and-play, and excellent for mid-sized video wall displays between 32 screens with resolutions up to 4K (3840x2160 @ 24 Hz/25 Hz/30 Hz/50 Hz/60 Hz) Full UHD.

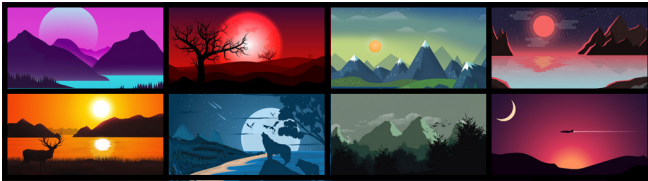
The MXWALL-UHD is simple to control, outfitted with easy front-panel buttons and optional RS232 control. Better still, the MXWALL-UHD comes with SmartAVI's intuitive MXWall Manager software absolutely free! MXWall Manager software let's users manually create and adjust their ideal video wall displays using simple click-and-drag operation: it's fun and great for users of any technical skill level! Users can choose from a number of great pre-configured screen modes as well, displaying content in full video wall, four-screen quad, and individual screen modes with the press of a button. The MXWALL-UHD also features TCP/IP web control for LAN-connected units, so users can control the contents of the video wall from the comfort of a PC workstation.

Its compact design and powerful processing power makes the MXWALL-UHD the perfect solution for any video wall installation. Plug-and-play, the MXWALL-UHD is immediately ready for use as soon as it is connected to an AV set-up: no additional drivers or installers required. Better still, its exceptional hardware makes for stunning video wall displays in environments like retail spaces, educational facilities, conference rooms, command centers, event halls, entertainment venues, airports, and more!



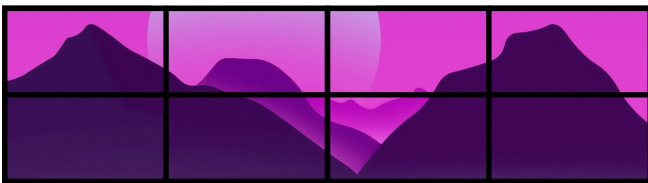
# AVAILABLE CONFIGURATIONS

It is easy to create different configurations or modes that are simple to navigate through with the MXWALL-UHD. There are endless possibilities. Creating and switching between display modes is simple. Front panel buttons, on-screen-display, RS232, and TCP/IP can be used to switch between modes at will. The MXWALL-UHD presents nearly unlimited configuration possibilities.



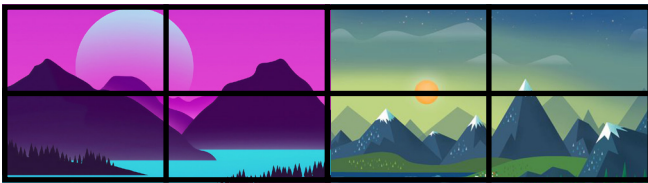
## INDIVIDUAL MODE

Users can route individual input images to each display individually.



## VIDEO WALL MODE

Users can stretch an input image across 8 UHD screens with resolutions of up to 4K/60Hz.

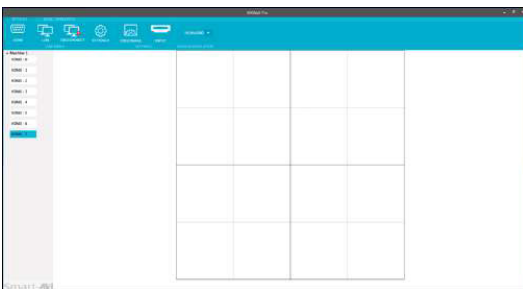


## CUSTOM DISPLAYS

User defined custom displays can be created with supplied software: Users can populate individual screens with multiple inputs. Add any of the input signals to play along side others within a single display.

# MXWALL MANAGER SOFTWARE

The MXWALL-UHD also comes with SmartAVI's intuitive MXWall Manager software, which allows users to create amazing video wall displays in minutes. Its click-and-drag operation and simple layout ensure managing video walls is easy and effective every time!



## EASY TO USE

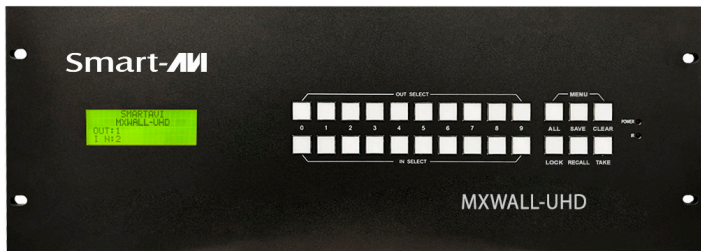
The MXWall Manager software features a streamlined layout that keeps things simple and clear. Our intuitive menus and settings interface ensure set-ups always are easy and stress-free. Choose from settings like aspect-ratio, rows, columns, video sources, and more! Adjust resolutions, scaling, and active monitors on the fly. Not happy with your current configuration? Just clear the workspace and start fresh: it's that simple!

## FULLY CUSTOMIZABLE

Take your pick of any of our versatile display modes. Select any screen and input the source you would prefer. Even multiple video sources can share a single screen with INDIVIDUAL and QUAD display modes. The possibilities are as endless as your creative potential!



# FRONT AND BACK



MXWALL-UHD Front



MXWALL-UHD Back

# TECHNICAL SPECIFICATIONS

VIDEO	
Video Amplifier Bandwidth	18 Gbps
Input Video Signal	Video (TMDS) 0.4~1.0Vpp
Input DDC Signal	5 volts
Compliances	HDMI 2.0, HDCP 2.2
Input Resolutions	3840 x 2160 @ 24 Hz / 25 Hz / 30 Hz / 50 Hz / 60 Hz
Output Resolutions	3840 x 2160 @ 24 Hz / 25 Hz / 30 Hz / 50 Hz / 60 Hz; 1080p @ 60 Hz
Video Type	HDMI
Input Interface	(32) HDMI
Output Interface	(32) HDMI

AUDIO	
Format	Stereo
Input Interface	(32) 3.5mm (Female)
Output Interface	(32) 3.5mm (Female)

CONTROL	
Front Panel	Tactile Switches
RS-232	DB9 connector, Baud Rate 115200
TCP/IP	RJ-45, UDP telnet

OTHER	
Working Temperature	0°C~+40°C
Storage Humidity	20%~90%
Weight	24.45 lbs
Dimensions	17" W x 7 1/8" H x 15" D
Power Supply	50/60Hz, 110-240 VAC
Consumption	100W

PART NO.	DESCRIPTION
MXWALL-UHD-S	32x32 4K/60Hz Video Wall Processor and Matrix Switch. Includes: [MXWALL-UHD and CCPWR06]

[www.smartavi.com](http://www.smartavi.com)

Tel: (888) 994-7427 • (702) 800-0005  
 2455 W Cheyenne Ave, Suite 112  
 North Las Vegas, NV 89032

**Smart-AVI**  
 SMART AUDIO VIDEO INNOVATION